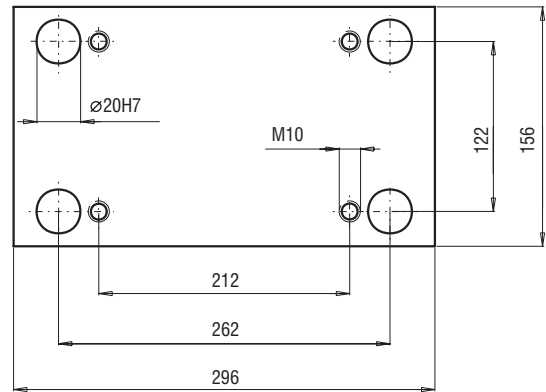
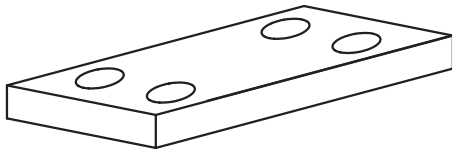
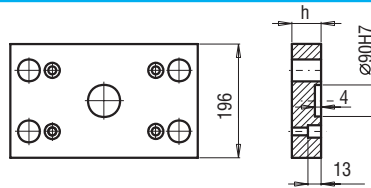


156x296

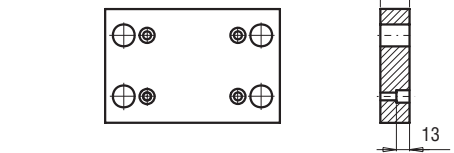


PK 01
PK 11



PK 01/196x296x

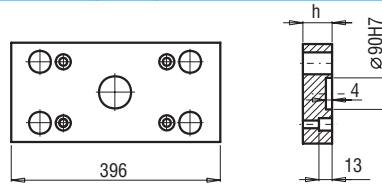
h	FCPK-1	FCPK-2
27	■	■



PK 11/196x296x

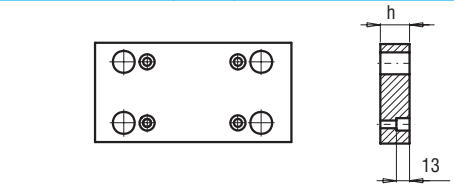
h	FCPK-1	FCPK-2
27	■	■

PK 02
PK 12



PK 02/156x396x

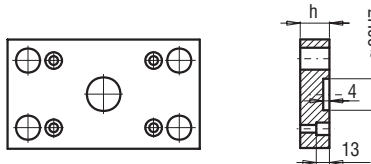
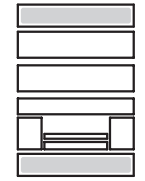
h	FCPK-1	FCPK-2
27	■	■



PK 12/156x396x

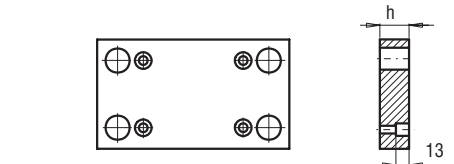
h	FCPK-1	FCPK-2
27	■	■

PK 21
PK 22



PK 21/156x296x

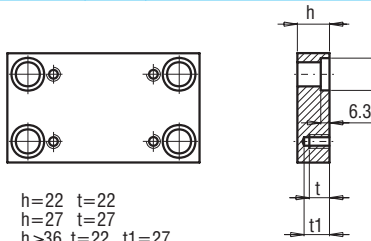
h	FCPK-1	FCPK-2
22	■	■



PK 22/156x296x

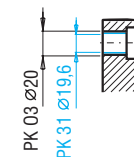
h	FCPK-1	FCPK-2
22	■	■

PK 03
PK 31



h=22 t=22
h=27 t=27
h≥36 t=22 t1=27

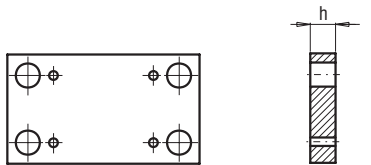
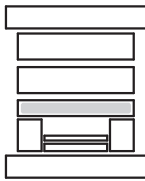
PK 03/156x296x
PK 31/156x296x



h	FCPK-1	FCPK-2	FCPK-3	*	*
22	■	■	■		
27	■	■	■		
36	■	■	■		
46	■	■	■		
56	■	■	■		
66	■	■	■		
76	■	■	■		

*Inne gatunki materiałów - patrz str. I.3
*For other steel types - see page no I.3

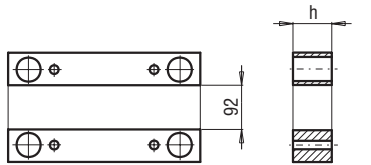
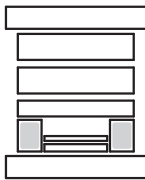
PK 04



PK 04/156x296x

h	FCPK-1	FCPK-2
27	■	■
36	■	■

PK 05



PK 05/32x296x

h	FCPK-1
46	■
56	■
76	■