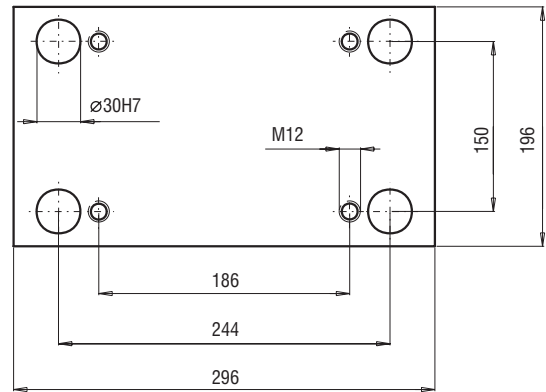
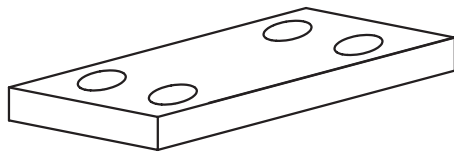
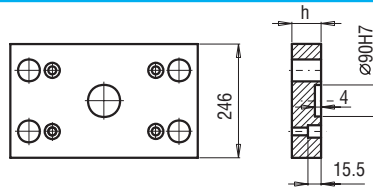
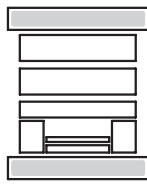


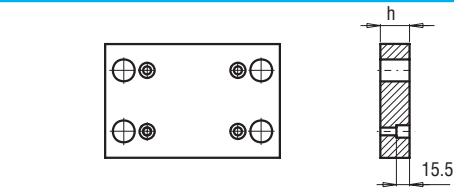
196x296



PK 01  
PK 11

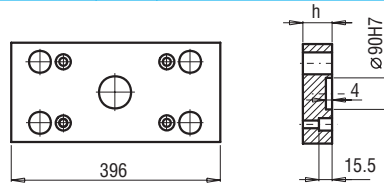
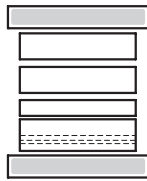


PK 01/246x296x	h	FCPK-1	FCPK-2
	27	█	█
	36	█	█

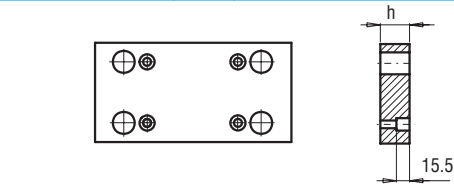


PK 11/246x296x	h	FCPK-1	FCPK-2
	27	█	█
	36	█	█

PK 02  
PK 12

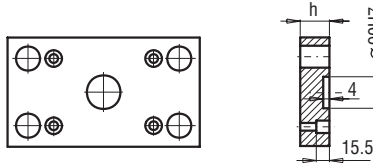
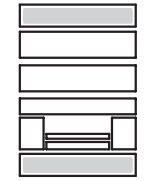


PK 02/196x396x	h	FCPK-1	FCPK-2
	27	█	█
	36	█	█

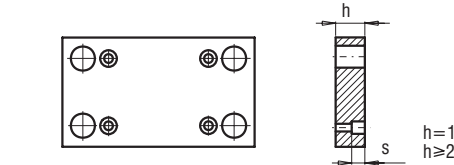


PK 12/196x396x	h	FCPK-1	FCPK-2
	27	█	█
	36	█	█

PK 21  
PK 22

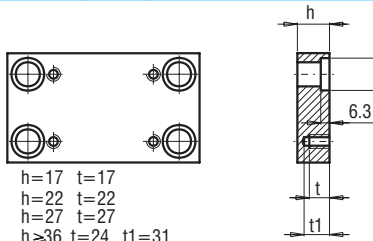
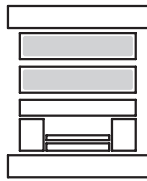


PK 21/196x296x	h	FCPK-1	FCPK-2
	22	█	█
	27	█	█



PK 22/196x296x	h	FCPK-1	FCPK-2
	17	█	█
	22	█	█
	27	█	█

PK 03  
PK 31

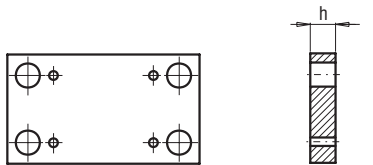


h=17 t=17  
h=22 t=22  
h=27 t=27  
h≥36 t=24 t1=31

PK 03/196x296x PK 31/196x296x	h	FCPK-1	FCPK-2	FCPK-3	*	*
	17	█	█	█		
	22	█	█	█		
	27	█	█	█		
	36	█	█	█		
	46	█	█	█		
	56	█	█	█		
	66	█	█	█		
	76	█	█	█		
	86	█	█	█		
	96	█	█	█		

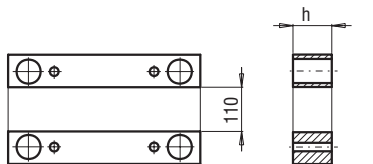
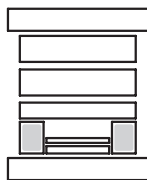
\*Inne gatunki materiałów - patrz str. I.3  
\*For other steel types - see page no I.3

PK 04



PK 04/196x296x	h	FCPK-1	FCPK-2
	36	█	█

PK 05



PK 05/43x296x	h	FCPK-1
	56	█
	76	█
	96	█