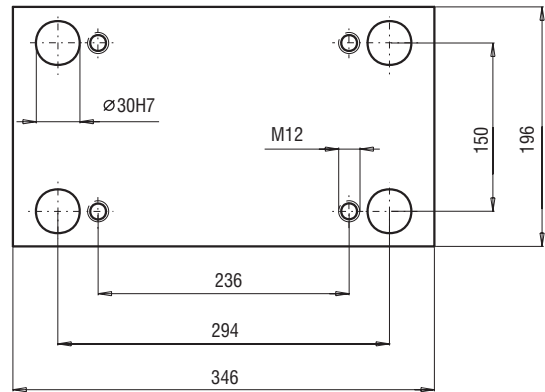
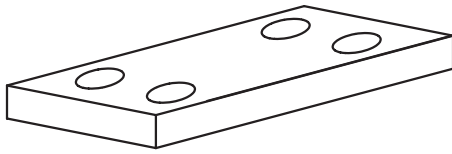
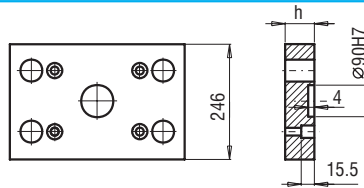
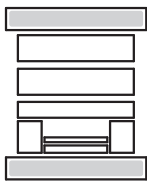


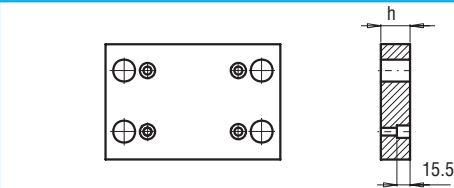
196x346



PK 01
PK 11

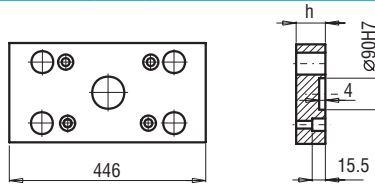
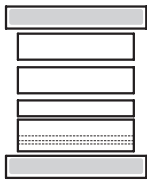


PK 01/246x346x	h	FCPK-1	FCPK-2
	27		
	36		

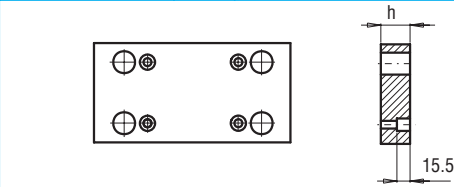


PK 11/246x346x	h	FCPK-1	FCPK-2
	27		
	36		

PK 02
PK 12

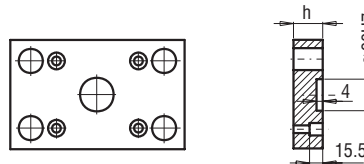
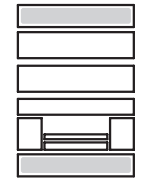


PK 02/196x446x	h	FCPK-1	FCPK-2
	27		
	36		

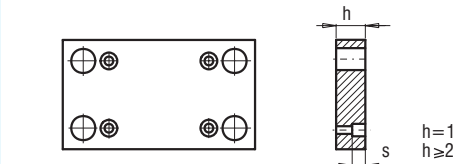


PK 12/196x446x	h	FCPK-1	FCPK-2
	27		
	36		

PK 21
PK 22

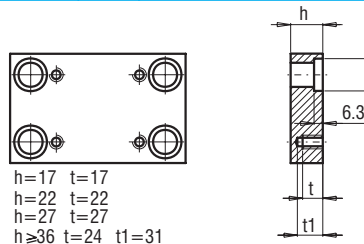
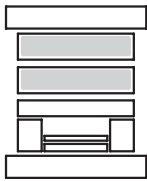


PK 21/196x346x	h	FCPK-1	FCPK-2
	22		
	27		



PK 22/196x346x	h	FCPK-1	FCPK-2
	17		
	22		
	27		

PK 03
PK 31

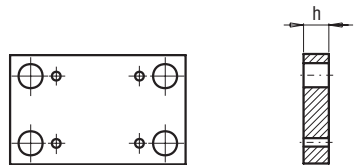
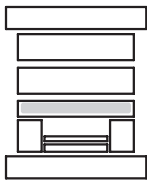


h=17 t=17
h=22 t=22
h=27 t=27
h≥36 t=24 t1=31

PK 03/196x346x PK 31/196x346x	h	FCPK-1	FCPK-2	FCPK-3	*	*
	17					
	22					
	27					
	36					
	46					
	56					
	66					
	76					
	86					
	96					

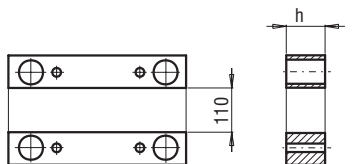
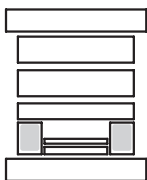
*Inne gatunki materiałów - patrz str. I.3
*For other steel types - see page no I.3

PK 04



PK 04/196x346x	h	FCPK-1	FCPK-2
	36		

PK 05



PK 05/43x346x	h	FCPK-1
	56	
	76	
	96	