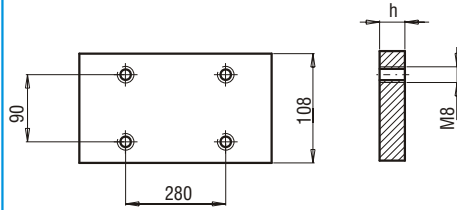
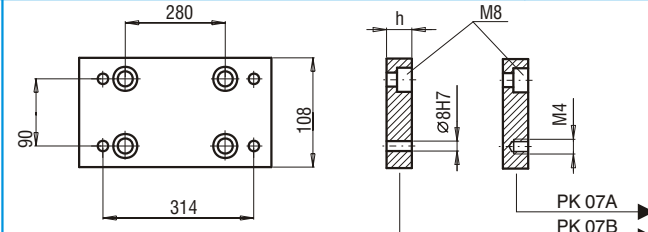


PK 06



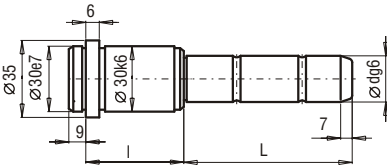
PK 06/108x346x	h	FCPK-1		
	12			

PK 07A  
PK 07B

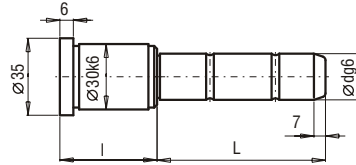


PK 07A/108x346x	h	FCPK-1	FCPK-2
PK 07B/108x346x	17		

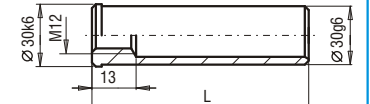
SLE



SXE

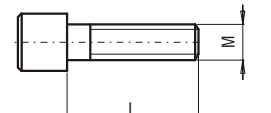


TUE



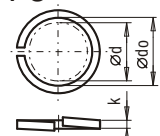
d	l	L	SLE-24/22 ...	d	l	L	SLE-24/22 ...	d	l	L	SXE-24/22 ...	d	l	L	SXE-24/22 ...	L	TUE-30...	L	TUE-30...	
24/22	17	35	SLE-.017035	24/22	46	125	SLE-.046125	24/22	27	25	SXE-.027025	24/22	46	165	SXE-.046165	40	TUE-30040	140	TUE-30140	
		55	SLE-.017055			165	SLE-.046165			45	SXE-.027045			56	25	SXE-.056025	60	TUE-30060	160	TUE-30160
		75	SLE-.017075			205	SLE-.046205			50	SXE-.027050				45	SXE-.056045	80	TUE-30080	180	TUE-30180
	22	35	SLE-.022035		56	35	SLE-.056035			60	SXE-.027060				55	SXE-.056055	100	TUE-30100	200	TUE-30200
		55	SLE-.022055			55	SLE-.056055			65	SXE-.027065				75	SXE-.056075	120	TUE-30120	240	TUE-30240
		75	SLE-.022075			75	SLE-.056075			70	SXE-.027070				95	SXE-.056095				
		105	SLE-.022105			95	SLE-.056095			80	SXE-.027080				115	SXE-.056115				
		130	SLE-.022130			115	SLE-.056115			85	SXE-.027085				165	SXE-.056165				
	27	35	SLE-.027035			165	SLE-.056165			105	SXE-.027105				55	SXE-.066055				
		45	SLE-.027045			205	SLE-.056205			125	SXE-.027125				75	SXE-.066075				
		65	SLE-.027065		66	35	SLE-.066035			165	SXE-.027165				95	SXE-.066095				
		85	SLE-.027085			55	SLE-.066055		36	25	SXE-.036025				75	SXE-.066075				
		105	SLE-.027105			75	SLE-.066075			45	SXE-.036045				55	SXE-.036055				
		125	SLE-.027125			155	SLE-.066155			50	SXE-.036050				60	SXE-.036060				
		165	SLE-.027165			75	SLE-.066075			70	SXE-.036070				75	SXE-.036075				
		205	SLE-.027205		76	55	SLE-.076055			80	SXE-.036080				95	SXE-.036095				
		245	SLE-.027245			115	SLE-.076115			115	SXE-.036115				115	SXE-.036115				
		285	SLE-.027285			145	SLE-.076145			135	SXE-.036135				165	SXE-.036165				
	36	35	SLE-.036035			135	SLE-.086135			25	SXE-.046025				25	SXE-.046025				
		55	SLE-.036055			145	SLE-.076145			45	SXE-.046045				45	SXE-.046045				
		75	SLE-.036075		86	55	SLE-.086055			50	SXE-.046050				60	SXE-.046060				
		95	SLE-.036095			75	SLE-.086075			65	SXE-.046065				70	SXE-.046070				
		115	SLE-.036115			95	SLE-.086095			80	SXE-.046080				85	SXE-.046085				
		135	SLE-.036135			135	SLE-.086135			105	SXE-.046105				105	SXE-.046105				
		165	SLE-.036165		96	55	SLE-.096055			125	SXE-.046125				125	SXE-.046125				
		205	SLE-.036205			75	SLE-.096075													
		245	SLE-.036245			95	SLE-.096095													
		285	SLE-.036285			125	SLE-.096125													
	46	35	SLE-.046035		116	75	SLE-.116075													
		45	SLE-.046045			115	SLE-.116115													
		65	SLE-.046065			155	SLE-.116155													
		85	SLE-.046085			95	SLE-.136095													
		105	SLE-.046105		136	95	SLE-.136095													
					135	135	SLE-.136135													

SM

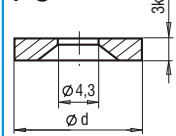


L	SM-M x L	L	SM-M x L	L	SM-M x L
16	SM-08016	55	SM-12055	160	SM-12160
12	SM-12012	170	SM-12060	170	SM-12170
14	SM-12014	65	SM-12065	180	SM-12180
16	SM-12016	70	SM-12070	190	SM-12190
18	SM-12018	75	SM-12075	200	SM-12200
20	SM-12020	80	SM-12080	220	SM-12220
22	SM-12022	90	SM-12090	240	SM-12240
25	SM-12025	100	SM-12100	260	SM-12260
30	SM-12030	110	SM-12110	280	SM-12280
35	SM-12035	120	SM-12120	300	SM-12300
40	SM-12040	130	SM-12130	320	SM-12320
45	SM-12045	140	SM-12140	340	SM-12340
50	SM-12050	150	SM-12150		

PS

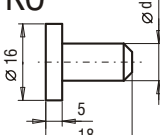


PO

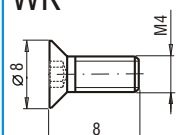


d	PN-77/M-82008 d <sub>o</sub> x k	d	PO-...
8	12 8.2x1.6 12.2x2.5	18	PO-1803

KO

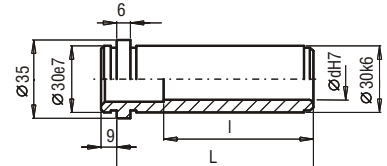


WK

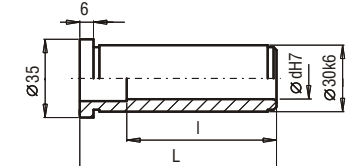


d	KO-...	d	DIN 7991 d x L
8	KO-1608	M4	M4 x 8

TPE



TXE



d	l	L	TPE-24/22 ...	d	l	L	TPE-24/22 ...	d	l	L	TXE-24/22 ...	d	l	L	TXE-24/22 ...
24/22	26	17	TPE-.017	24/22	75	66	TPE-.066	24/22	17	17	TXE-.017	24/22	66	66	TXE-.066
	31	22	TPE-.022		85	76	TPE-.076		22	22	TXE-.022		76	76	TXE-.076
	36	27	TPE-.027		95	86	TPE-.086		27	27	TXE-.027		86	86	TXE-.086
	45	36	TPE-.036		96	96	TPE-.096		36	36	TXE-.036		96	96	TXE-.096
	55	46	TPE-.046		96	116	TPE-.116		46	46	TXE-.046		96	116	TXE-.116
	65	56	TPE-.056		96	136	TPE-.136		56	56	TXE-.056		96	136	TXE-.136
					96	156	TPE-.156								