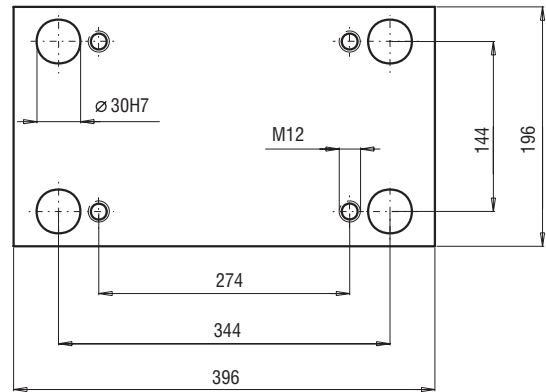
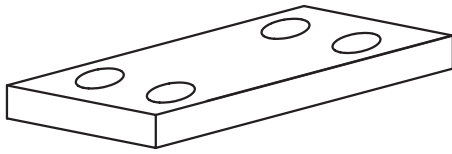
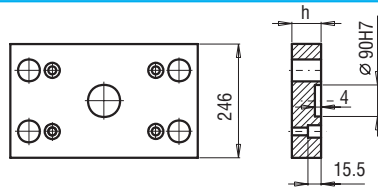
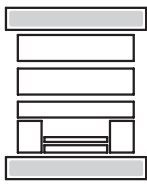


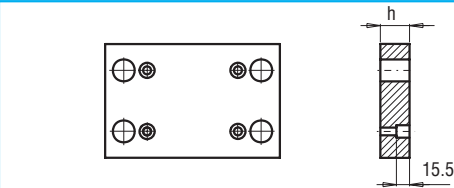
196x396



PK 01  
PK 11

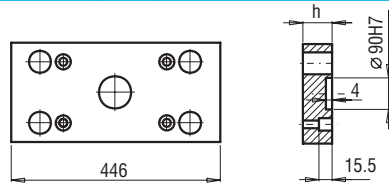
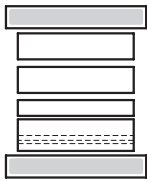


PK 01/246x396x	h	FCPK-1	FCPK-2				
	36						

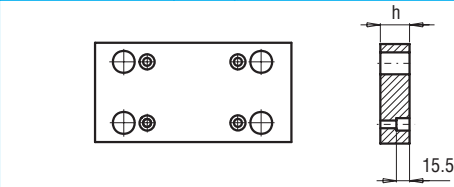


PK 11/246x396x	h	FCPK-1	FCPK-2				
	36						

PK 02  
PK 12

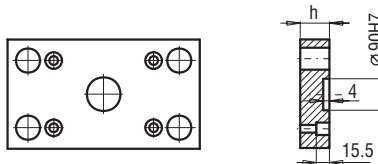
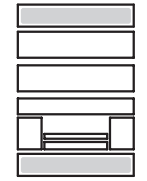


PK 02/196x446x	h	FCPK-1	FCPK-2				
	36						

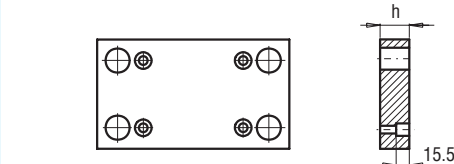


PK 12/196x446x	h	FCPK-1	FCPK-2				
	36						

PK 21  
PK 22

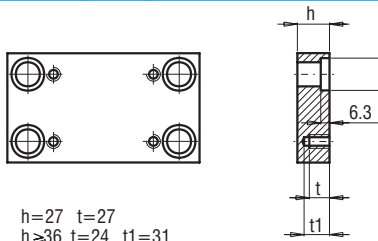
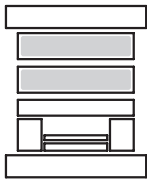


PK 21/196x396x	h	FCPK-1	FCPK-2				
	27						



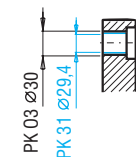
PK 22/196x396x	h	FCPK-1	FCPK-2				
	27						

PK 03  
PK 31



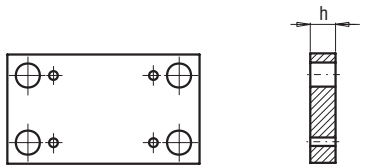
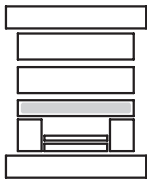
h=27 t=27  
h≥36 t=24 t1=31

PK 03/196x396x	h	FCPK-1	FCPK-2	FCPK-3	*	*
PK 31/196x396x	27					
	36					
	46					
	56					
	66					
	76					
	86					
	96					



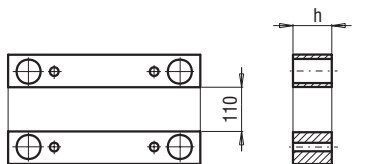
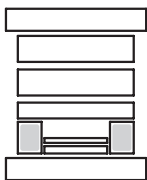
\*Inne gatunki materiałów - patrz str. I.3  
\*For other steel types - see page no I.3

PK 04



PK 04/196x396x	h	FCPK-1	FCPK-2				
	36						

PK 05



PK 05/43x396x	h	FCPK-1	FCPK-2				
	56						
	76						
	96						