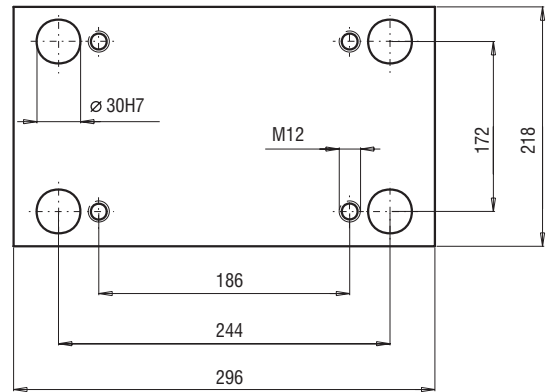
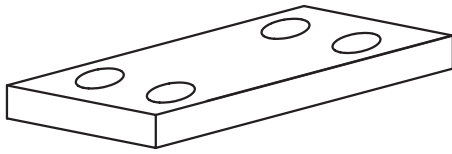
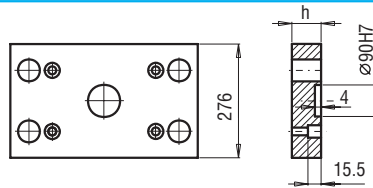


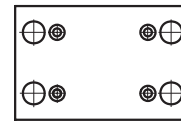
218x296



PK 01
PK 11

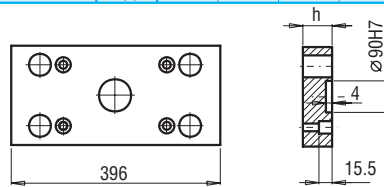
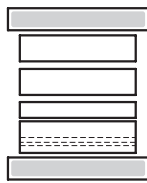


PK 01/276x296x	h	FCPK-1	FCPK-2
	27	—	—
	36	—	—

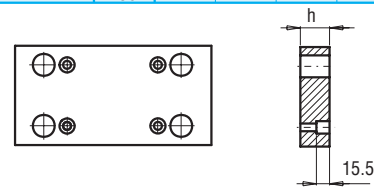


PK 11/276x296x	h	FCPK-1	FCPK-2
	27	—	—
	36	—	—

PK 02
PK 12

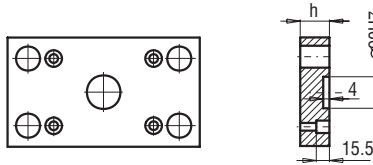
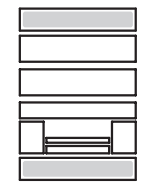


PK 02/218x396x	h	FCPK-1	FCPK-2
	27	—	—
	36	—	—

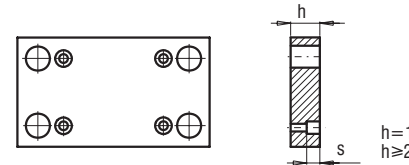


PK 12/218x396x	h	FCPK-1	FCPK-2
	27	—	—
	36	—	—

PK 21
PK 22



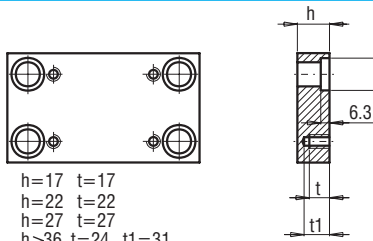
PK 21/218x296x	h	FCPK-1	FCPK-2
	22	—	—
	27	—	—



PK 22/218x296x	h	FCPK-1	FCPK-2
	17	—	—
	22	—	—
	27	—	—

h=17 s=13
h≥22 s=15.5

PK 03
PK 31

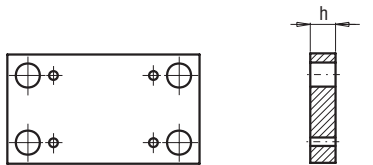


h=17 t=17
h=22 t=22
h=27 t=27
h≥36 t=24 t1=31

PK 03/218x296x PK 31/218x296x	h	FCPK-1	FCPK-2	FCPK-3	*	*
	17	—	—	—		
	22	—	—	—		
	27	—	—	—		
	36	—	—	—		
	46	—	—	—		
	56	—	—	—		
	66	—	—	—		
	76	—	—	—		
	86	—	—	—		
	96	—	—	—		

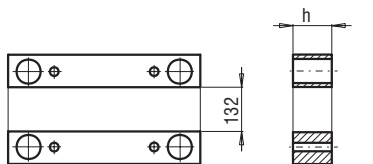
*Inne gatunki materiałów - patrz str. I.3
*For other steel types - see page no I.3

PK 04



PK 04/218x296x	h	FCPK-1	FCPK-2
	27	—	—
	36	—	—

PK 05



PK 05/43x296x	h	FCPK-1
	56	—
	76	—
	96	—