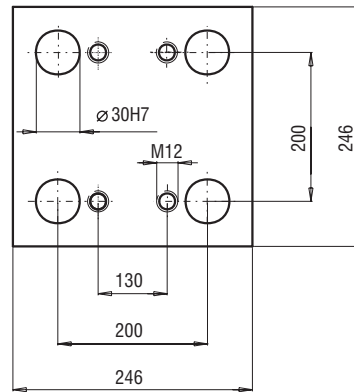
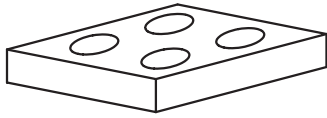
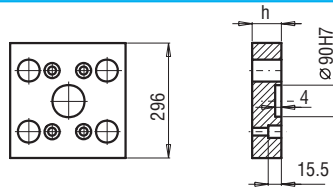
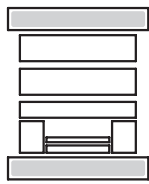


246x246



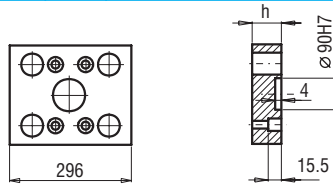
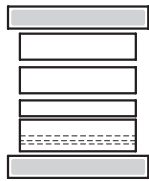
PK 01  
PK 11



PK 01/296x246x	h	FCPK-1	FCPK-2		
	27	■	■		
	36	■	■		

PK 11/296x246x	h	FCPK-1	FCPK-2		
	27	■	■		
	36	■	■		

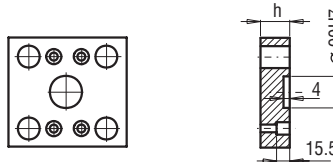
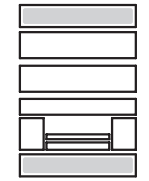
PK 02  
PK 12



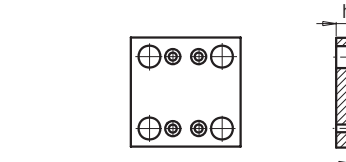
PK 02/246x296x	h	FCPK-1	FCPK-2		
	27	■	■		
	36	■	■		

PK 12/246x296x	h	FCPK-1	FCPK-2		
	27	■	■		
	36	■	■		

PK 21  
PK 22

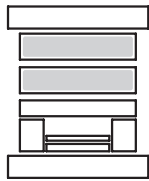


PK 21/246x246x	h	FCPK-1	FCPK-2		
	22	■	■		
	27	■	■		

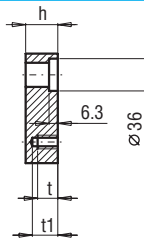


PK 22/246x246x	h	FCPK-1	FCPK-2		
	17	■	■		
	22	■	■		
	27	■	■		

PK 03  
PK 31



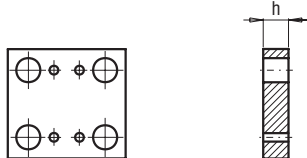
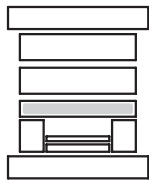
h=17 t=17  
h=22 t=22  
h=27 t=27  
h≥36 t=24 t1=31



PK 03/246x246x PK 31/246x246x	h	FCPK-1	FCPK-2	FCPK-3	*	*
	17	■	■	■		
	22	■	■	■		
	27	■	■	■		
	36	■	■	■		
	46	■	■	■		
	56	■	■	■		
	66	■	■	■		
	76	■	■	■		
	86	■	■	■		
	96	■	■	■		

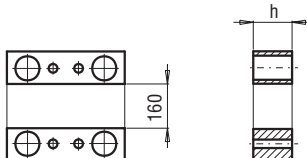
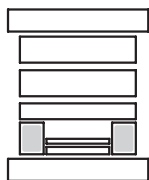
\*Inne gatunki materiałów - patrz str. I.3  
\*For other steel types - see page no I.3

PK 04



PK 04/246x246x	h	FCPK-1	FCPK-2		
	36	■	■		

PK 05



PK 05/43x246x	h	FCPK-1			
	56	■			
	76	■			
	96	■			