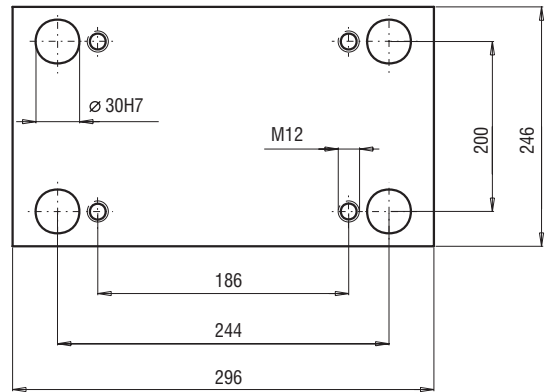
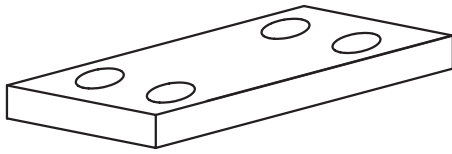
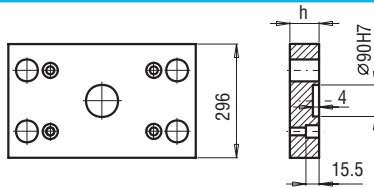
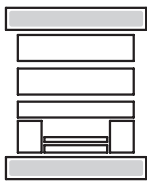


246x296



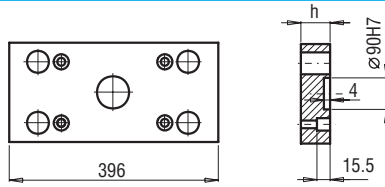
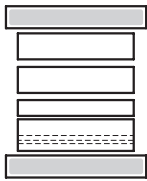
PK 01
PK 11



PK 01/296x296x	h	FCPK-1	FCPK-2
	27	█	█
	36	█	█

PK 11/296x296x	h	FCPK-1	FCPK-2
	27	█	█
	36	█	█

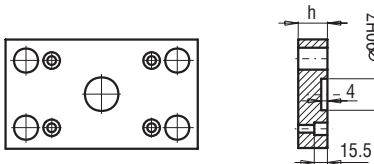
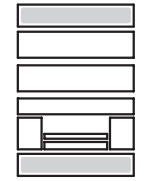
PK 02
PK 12



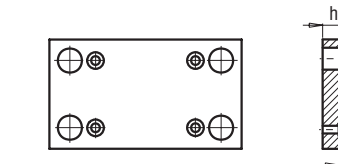
PK 02/246x396x	h	FCPK-1	FCPK-2
	27	█	█
	36	█	█

PK 12/246x396x	h	FCPK-1	FCPK-2
	27	█	█
	36	█	█

PK 21
PK 22



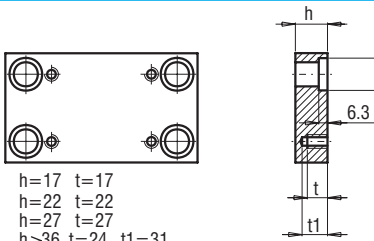
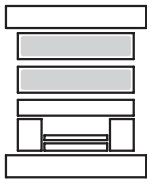
PK 21/246x296x	h	FCPK-1	FCPK-2
	22	█	█
	27	█	█



PK 22/246x296x	h	FCPK-1	FCPK-2
	17	█	█
	22	█	█
	27	█	█

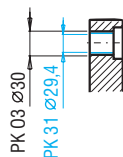
h=17 s=13
h≥22 s=15.5

PK 03
PK 31



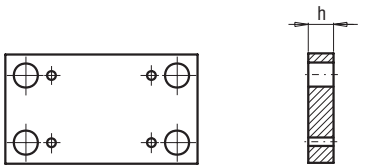
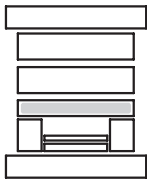
h=17 t=17
h=22 t=22
h=27 t=27
h≥36 t=24 t1=31

PK 03/246x296x PK 31/246x296x	h	FCPK-1	FCPK-2	FCPK-3	*	*
	17	█	█	█		
	22	█	█	█		
	27	█	█	█		
	36	█	█	█		
	46	█	█	█		
	56	█	█	█		
	66	█	█	█		
	76	█	█	█		
	86	█	█	█		
	96	█	█	█		
	116	█	█	█		



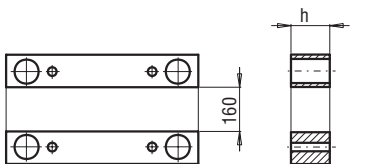
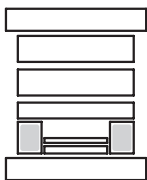
*Inne gatunki materiałów - patrz str. I.3
*For other steel types - see page no I.3

PK 04



PK 04/246x296x	h	FCPK-1	FCPK-2
	36	█	█

PK 05



PK 05/43x296x	h	FCPK-1
	56	█
	76	█
	96	█