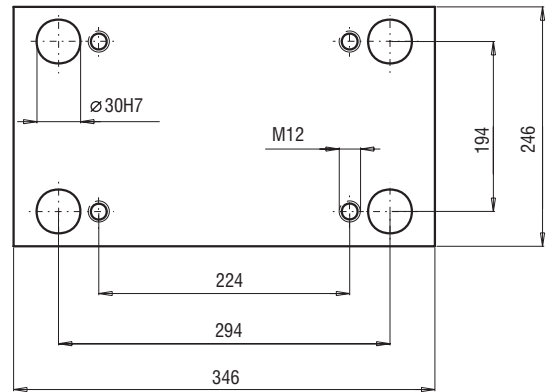
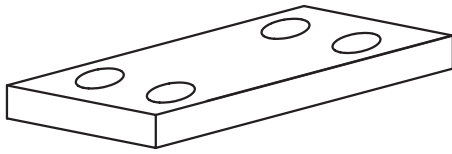
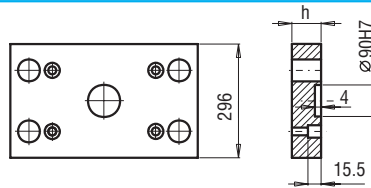


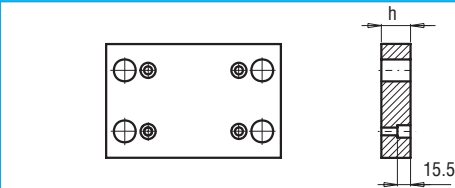
246x346



PK 01
PK 11

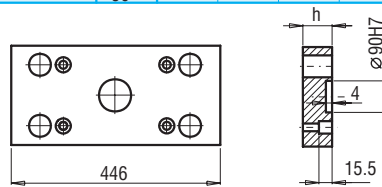
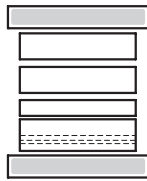


PK 01/296x346x	h	FCPK-1	FCPK-2		
	27	■	■		
	36	■	■		

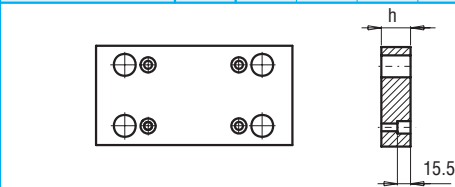


PK 11/296x346x	h	FCPK-1	FCPK-2		
	27	■	■		
	36	■	■		

PK 02
PK 12

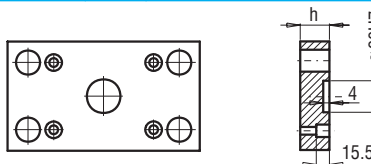
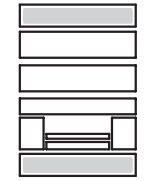


PK 02/246x446x	h	FCPK-1	FCPK-2		
	27	■	■		
	36	■	■		

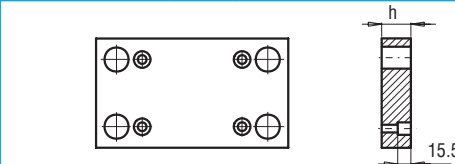


PK 12/246x446x	h	FCPK-1	FCPK-2		
	27	■	■		
	36	■	■		

PK 21
PK 22

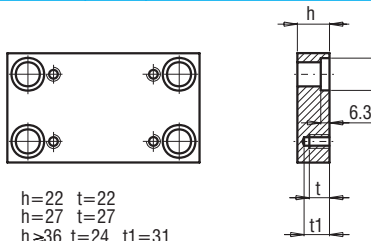
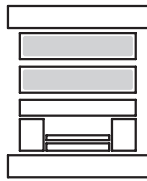


PK 21/246x346x	h	FCPK-1	FCPK-2		
	22	■	■		
	27	■	■		



PK 22/246x346x	h	FCPK-1	FCPK-2		
	22	■	■		
	27	■	■		

PK 03
PK 31

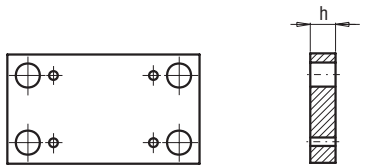


h=22 t=22
h=27 t=27
h≥36 t=24 t1=31

PK 03/246x346x PK 31/246x346x	h	FCPK-1	FCPK-2	FCPK-3	*	*
	22	■	■	■		
	27	■	■	■		
	36	■	■	■		
	46	■	■	■		
	56	■	■	■		
	66	■	■	■		
	76	■	■	■		
	86	■	■	■		
	96	■	■	■		
	116	■	■	■		

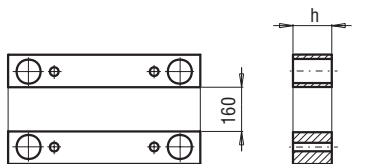
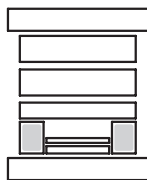
*Inne gatunki materiałów - patrz str. I.3
*For other steel types - see page no I.3

PK 04



PK 04/246x346x	h	FCPK-1	FCPK-2		
	36	■	■		
	46	■	■		

PK 05



PK 05/43x346x	h	FCPK-1			
	56	■			
	76	■			
	96	■			