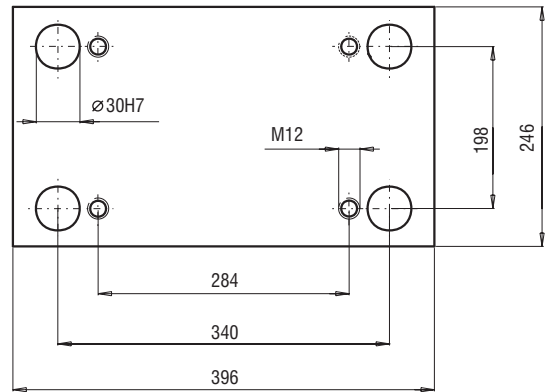
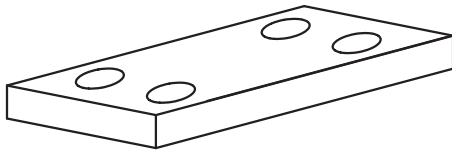
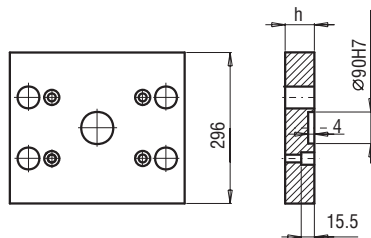


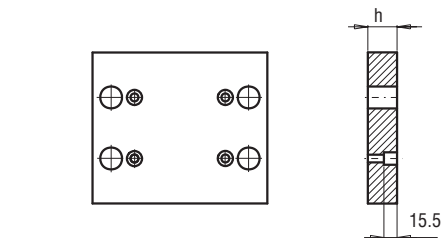
246x396



PK 01
PK 11

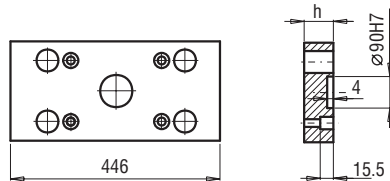
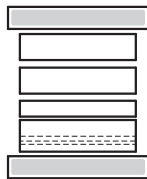


PK 01/296x396x	h	FCPK-1	FCPK-2		
	27	█	█		
	36	█	█		

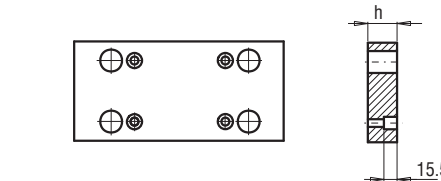


PK 11/296x396x	h	FCPK-1	FCPK-2		
	27	█	█		
	36	█	█		

PK 02
PK 12

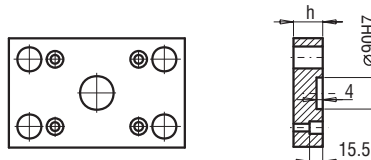
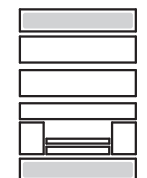


PK 02/246x446x	h	FCPK-1	FCPK-2		
	27	█	█		
	36	█	█		

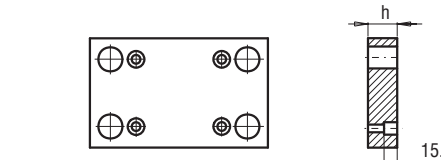


PK 12/246x446x	h	FCPK-1	FCPK-2		
	27	█	█		
	36	█	█		

PK 21
PK 22

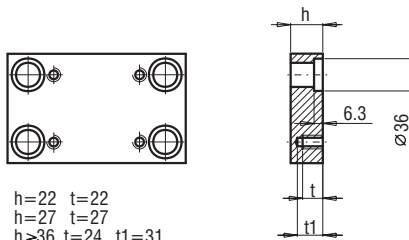


PK 21/246x396x	h	FCPK-1	FCPK-2		
	22	█	█		
	27	█	█		



PK 22/246x396x	h	FCPK-1	FCPK-2		
	22	█	█		
	27	█	█		

PK 03
PK 31

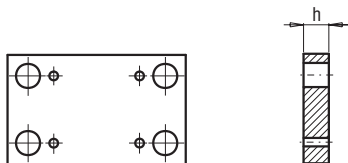


h=22 t=22
h=27 t=27
h≥36 t=24 t1=31

PK 03/246x396x	h	FCPK-1	FCPK-2	FCPK-3	*	*
PK 31/246x396x	22	█	█	█		
	27	█	█	█		
	36	█	█	█		
	46	█	█	█		
	56	█	█	█		
	66	█	█	█		
	76	█	█	█		
	86	█	█	█		
	96	█	█	█		
	116	█	█	█		

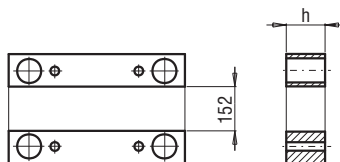
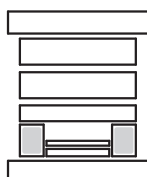
*Inne gatunki materiałów - patrz str. I.3
*For other steel types - see page no I.3

PK 04



PK 04/246x396x	h	FCPK-1	FCPK-2		
	36	█	█		
	46	█	█		

PK 05



PK 05/47x396x	h	FCPK-1			
	56	█			
	76	█			
	96	█			