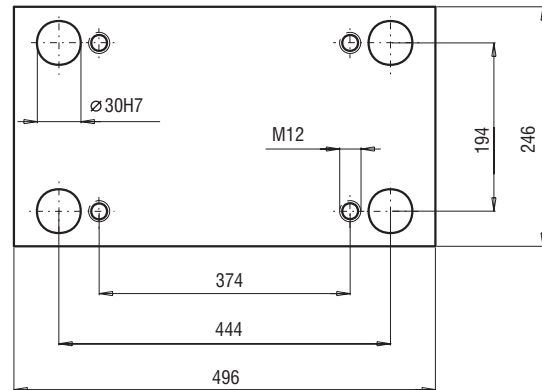
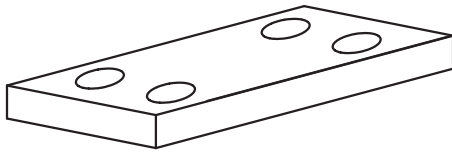
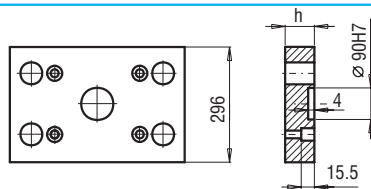
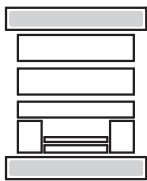


246x496



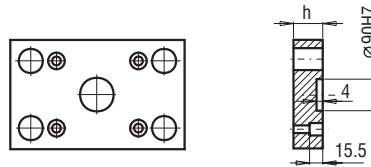
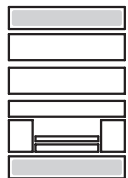
PK 01
PK 11



PK 01/296x496x	h	FCPK-1	FCPK-2				
	36	■	■				

PK 11/296x496x	h	FCPK-1	FCPK-2				
	36	■	■				

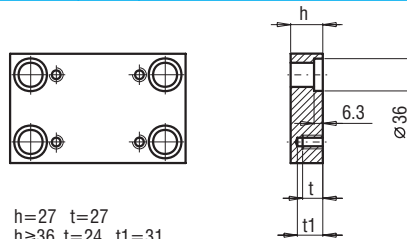
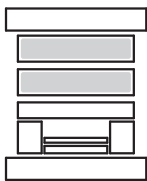
PK 21
PK 22



PK 21/246x496x	h	FCPK-1	FCPK-2				
	27	■	■				

PK 22/246x496x	h	FCPK-1	FCPK-2				
	27	■	■				

PK 03
PK 31

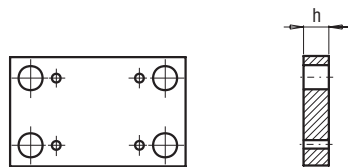
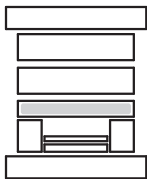


h=27 t=27
h≥36 t=24 t1=31

PK 03/246x496x PK 31/246x496x	h	FCPK-1	FCPK-2	FCPK-3	*	*
	27	■	■	■		
	36	■	■	■		
	46	■	■	■		
	56	■	■	■		
	66	■	■	■		
	76	■	■	■		
	86	■	■	■		
	96	■	■	■		
	116	■	■	■		

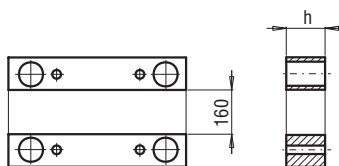
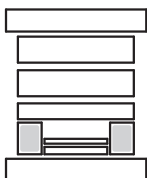
*Inne gatunki materiałów - patrz str. I.3
*For other steel types - see page no I.3

PK 04



PK 04/246x496x	h	FCPK-1	FCPK-2				
	36	■	■				
	46	■	■				

PK 05



PK 05/43x496x	h	FCPK-1					
	56	■					
	76	■					
	96	■					