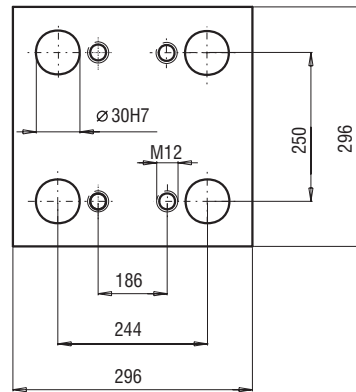
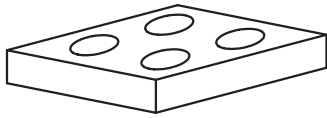
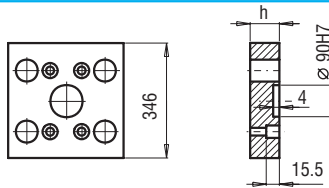
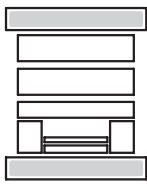


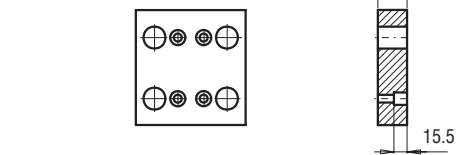
296x296



PK 01
PK 11

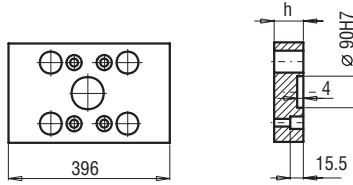
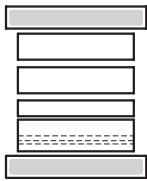


PK 01/346x296x	h	FCPK-1	FCPK-2
	27	■	■
	36	■	■

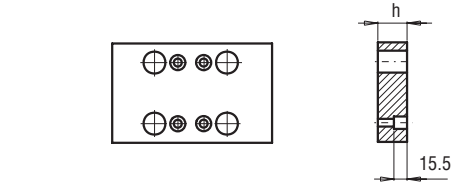


PK 11/346x296x	h	FCPK-1	FCPK-2
	27	■	■
	36	■	■

PK 02
PK 12

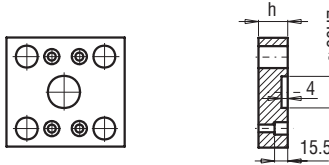
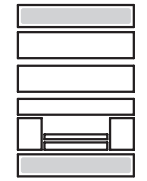


PK 02/296x396x	h	FCPK-1	FCPK-2
	27	■	■
	36	■	■

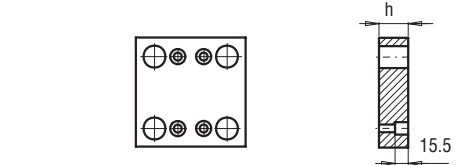


PK 12/296x396x	h	FCPK-1	FCPK-2
	27	■	■
	36	■	■

PK 21
PK 22

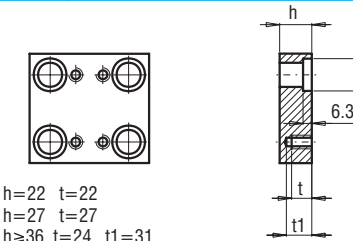
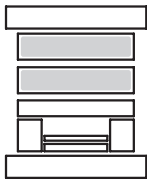


PK 21/296x296x	h	FCPK-1	FCPK-2
	22	■	■
	27	■	■



PK 22/296x296x	h	FCPK-1	FCPK-2
	22	■	■
	27	■	■

PK 03
PK 31

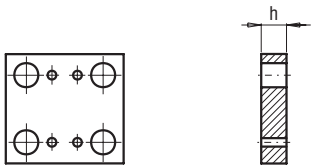
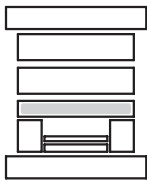


h=22 t=22
h=27 t=27
h≥36 t=24 t1=31

PK 03/296x296x PK 31/296x296x	h	FCPK-1	FCPK-2	FCPK-3	*	*
	22	■	■	■		
	27	■	■	■		
	36	■	■	■		
	46	■	■	■		
	56	■	■	■		
	66	■	■	■		
	76	■	■	■		
	86	■	■	■		
	96	■	■	■		
	116	■	■	■		

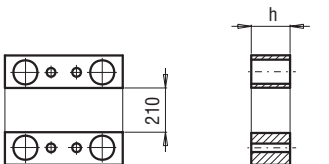
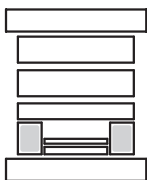
*Inne gatunki materiałów - patrz str. I.3
*For other steel types - see page no I.3

PK 04



PK 04/296x296x	h	FCPK-1	FCPK-2
	36	■	■
	46	■	■

PK 05



PK 05/43x296x	h	FCPK-1
	56	■
	76	■
	96	■