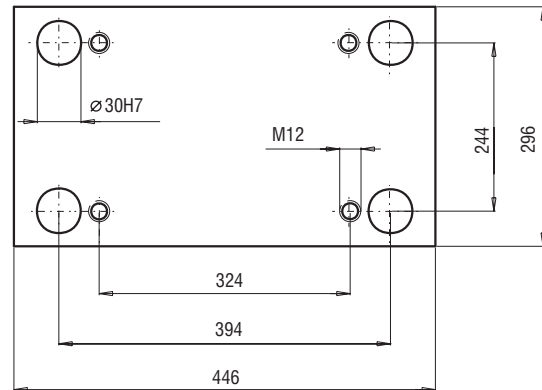
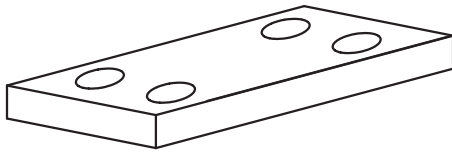
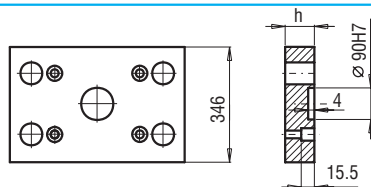
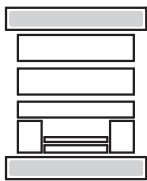


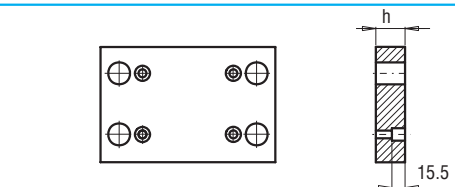
**296x446**



PK 01  
PK 11

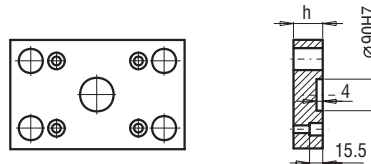
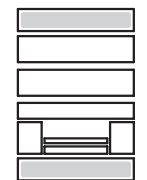


PK 01/346x446x	h	FCPK-1	FCPK-2				
	36	█	█				

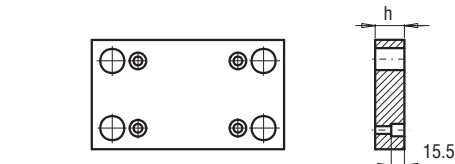


PK 11/346x446x	h	FCPK-1	FCPK-2				
	36	█	█				

PK 21  
PK 22

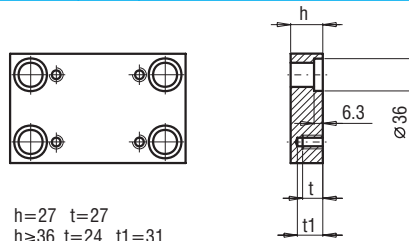


PK 21/296x446x	h	FCPK-1	FCPK-2				
	27	█	█				



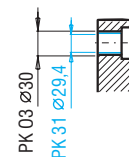
PK 22/296x446x	h	FCPK-1	FCPK-2				
	27	█	█				

PK 03  
PK 31



h=27 t=27  
h≥36 t=24 t1=31

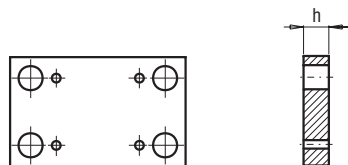
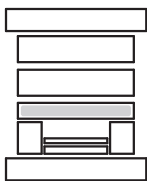
PK 03/296x446x  
PK 31/296x446x



h	FCPK-1	FCPK-2	FCPK-3	*	*
27	█	█	█		
36	█	█	█		
46	█	█	█		
56	█	█	█		
66	█	█	█		
76	█	█	█		
86	█	█	█		
96	█	█	█		
116	█	█	█		

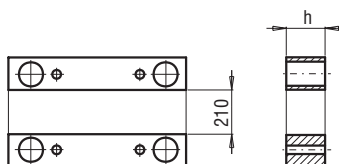
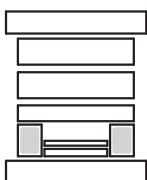
\*Inne gatunki materiałów - patrz str. I.3  
\*For other steel types - see page no I.3

PK 04



PK 04/296x446x	h	FCPK-1	FCPK-2				
	36	█	█				
	46	█	█				

PK 05



PK 05/43x446x	h	FCPK-1					
	56	█					
	76	█					
	96	█					