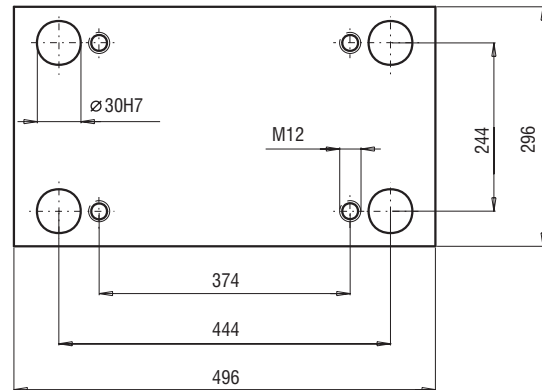
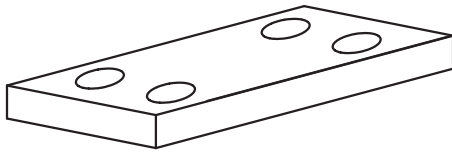
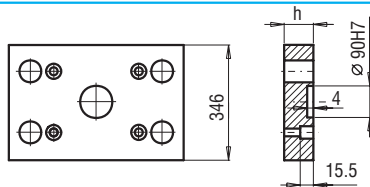
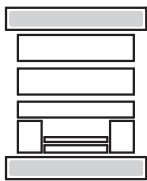


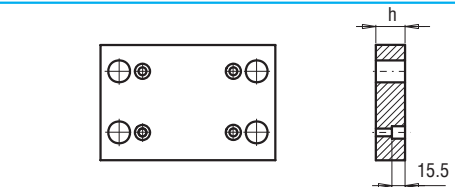
296x496



PK 01
PK 11

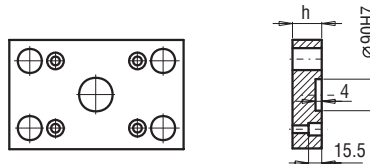
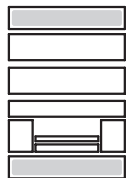


PK 01/346x496x	h	FCPK-1	FCPK-2			
	36					

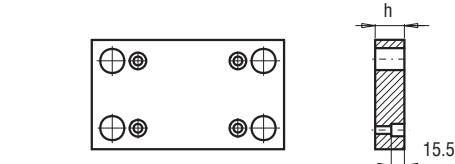


PK 11/346x496x	h	FCPK-1	FCPK-2			
	36					

PK 21
PK 22

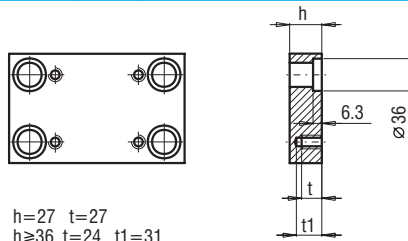
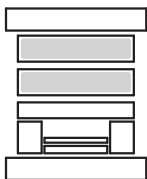


PK 21/296x496x	h	FCPK-1	FCPK-2			
	27					



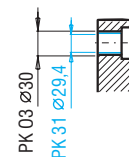
PK 22/296x496x	h	FCPK-1	FCPK-2			
	27					

PK 03
PK 31



h=27 t=27
h≥36 t=24 t1=31

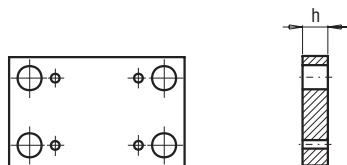
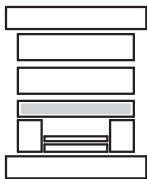
PK 03/296x496x
PK 31/296x496x



h	FCPK-1	FCPK-2	FCPK-3	*	*
27					
36					
46					
56					
66					
76					
86					
96					
116					

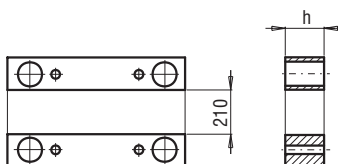
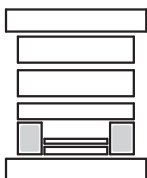
*Inne gatunki materiałów - patrz str. I.3
*For other steel types - see page no I.3

PK 04



PK 04/296x496x	h	FCPK-1	FCPK-2			
	36					
	46					

PK 05



PK 05/43x496x	h	FCPK-1				
	56					
	76					
	96					