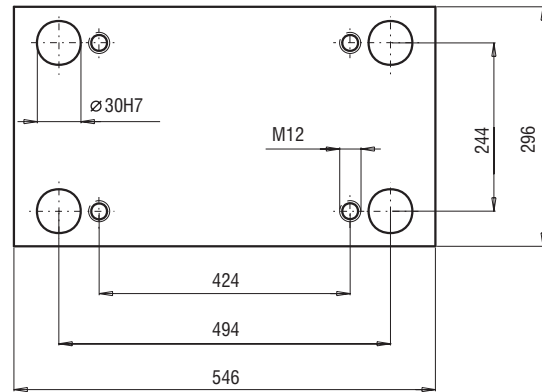
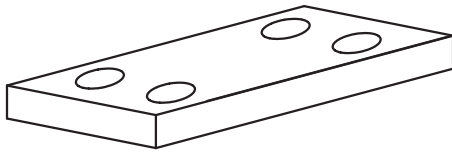
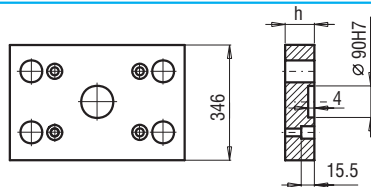
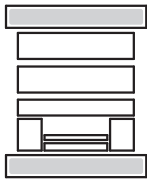


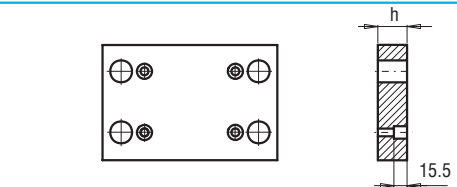
296x546



PK 01  
PK 11

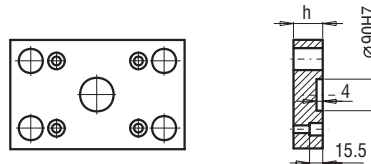
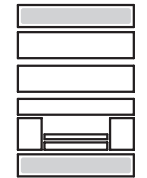


PK 01/346x546x	h	FCPK-1	FCPK-2		
	36				

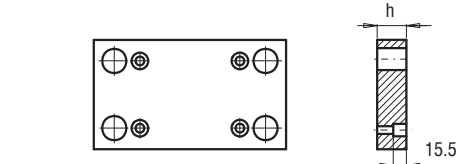


PK 11/346x546x	h	FCPK-1	FCPK-2		
	36				

PK 21  
PK 22

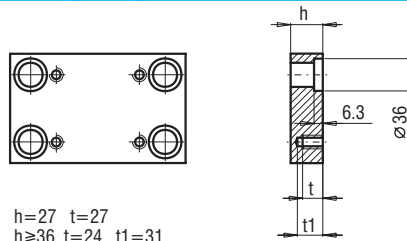
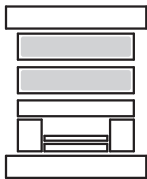


PK 21/296x546x	h	FCPK-1	FCPK-2		
	27				



PK 22/296x546x	h	FCPK-1	FCPK-2		
	27				

PK 03  
PK 31

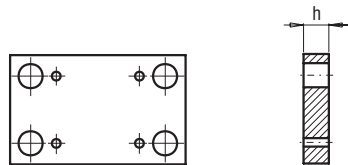
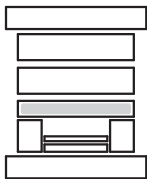


h=27 t=27  
h≥36 t=24 t1=31

PK 03/296x546x PK 31/296x546x	h	FCPK-1	FCPK-2	FCPK-3	*	*
	27					
	36					
	46					
	56					
	66					
	76					
	86					
	96					
	116					

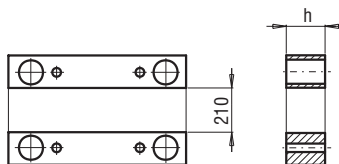
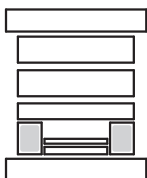
\*Inne gatunki materiałów - patrz str. I.3  
\*For other steel types - see page no I.3

PK 04



PK 04/296x546x	h	FCPK-1	FCPK-2		
	36				
	46				

PK 05



PK 05/43x546x	h	FCPK-1			
	56				
	76				
	96				