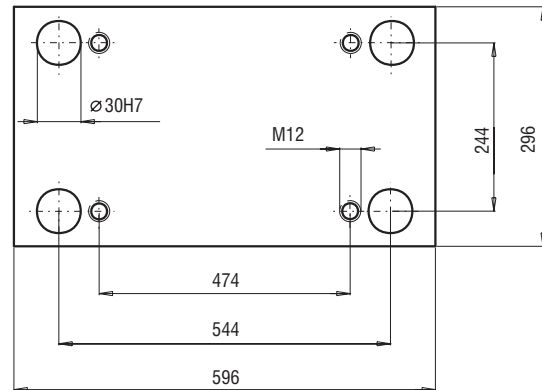
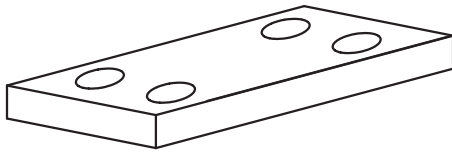
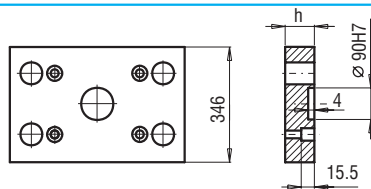


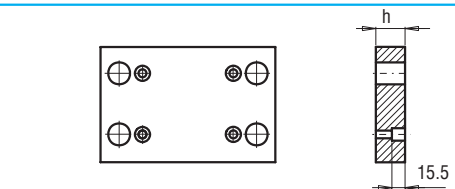
296x596



PK 01
PK 11

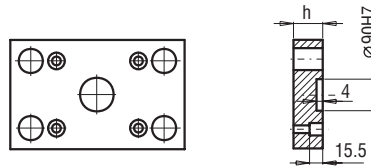
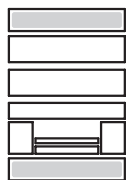


PK 01/346x596x	h	FCPK-1	FCPK-2			
	36					

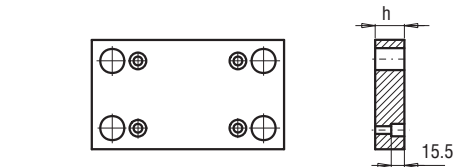


PK 11/346x596x	h	FCPK-1	FCPK-2			
	36					

PK 21
PK 22

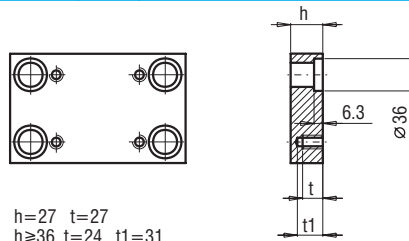


PK 21/296x596x	h	FCPK-1	FCPK-2			
	27					



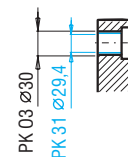
PK 22/296x596x	h	FCPK-1	FCPK-2			
	27					

PK 03
PK 31



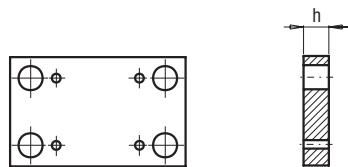
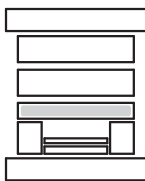
$h=27$ $t=27$
 $h \geq 36$ $t=24$ $t1=31$

PK 03/296x596x	h	FCPK-1	FCPK-2	FCPK-3	*	*
PK 31/296x596x	27					
	36					
	46					
	56					
	66					
	76					
	86					
	96					
	116					



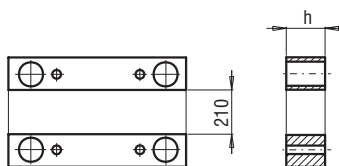
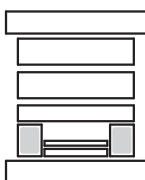
*Inne gatunki materiałów - patrz str. I.3
*For other steel types - see page no I.3

PK 04



PK 04/296x596x	h	FCPK-1	FCPK-2			
	36					
	46					

PK 05



PK 05/43x596x	h	FCPK-1				
	76					
	96					
	116					