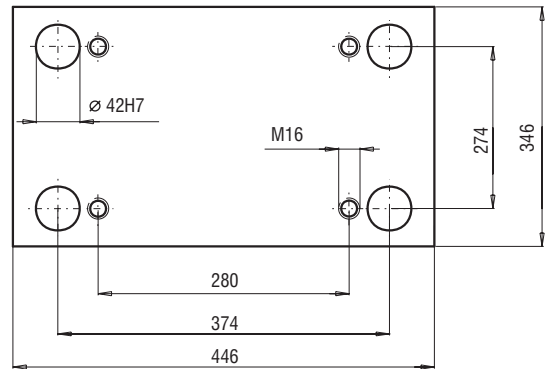
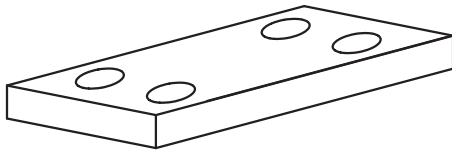
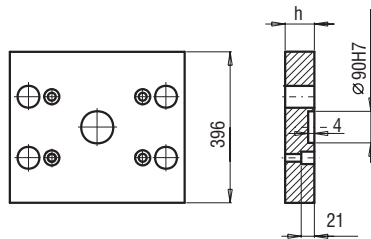
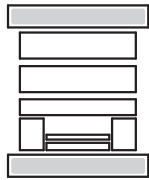


346x446



PK 01
PK 11



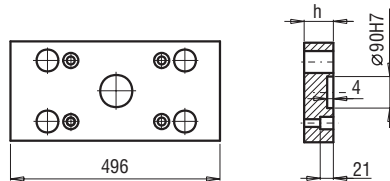
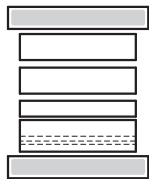
PK 01/396x446x

h	FCPK-1	FCPK-2
27	■	■
36	■	■
46	■	■

PK 11/396x446x

h	FCPK-1	FCPK-2
27	■	■
36	■	■
46	■	■

PK 02
PK 12



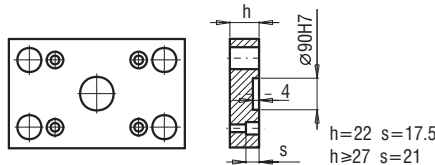
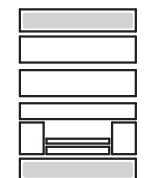
PK 02/346x496x

h	FCPK-1	FCPK-2	FCPK-3
27	■	■	■
36	■	■	■
46	■	■	■

PK 12/346x496x

h	FCPK-1	FCPK-2	FCPK-3
27	■	■	■
36	■	■	■
46	■	■	■

PK 21
PK 22



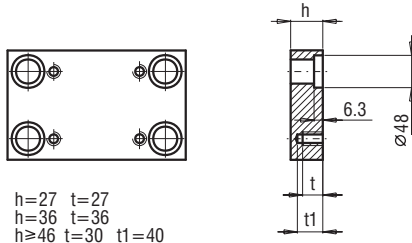
PK 21/346x446x

h	FCPK-1	FCPK-2
22	■	■
27	■	■
36	■	■

PK 22/346x446x

h	FCPK-1	FCPK-2
22	■	■
27	■	■
36	■	■

PK 03
PK 31

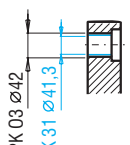


$h=27, t=27$
 $h=36, t=36$
 $h \ge 46, t=30, t1=40$

PK 03/346x446x

PK 31/346x446x

h	FCPK-1	FCPK-2	FCPK-3	*	*
27	■	■	■		
36	■	■	■		
46	■	■	■		
56	■	■	■		
66	■	■	■		
76	■	■	■		
86	■	■	■		
96	■	■	■		
116	■	■	■		



PK 04

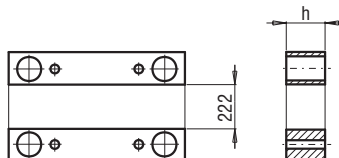


*Inne gatunki materiałów - patrz str. I.3
*For other steel types - see page no I.3

PK 04/346x446x

h	FCPK-1	FCPK-2
27	■	■
36	■	■
46	■	■

PK 05



PK 05/62x446x

h	FCPK-1
56	■
66	■
76	■
86	■
96	■
116	■
136	■