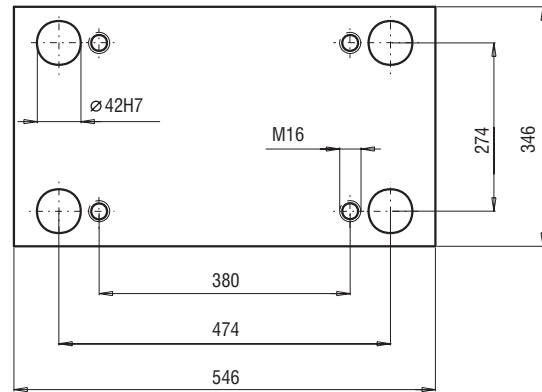
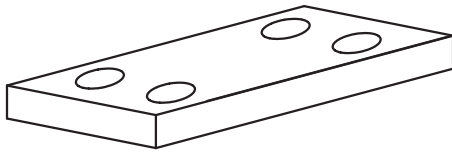
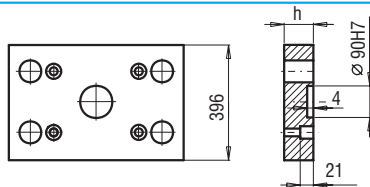


346x546



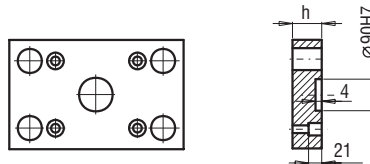
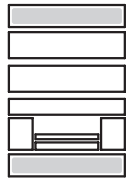
PK 01
PK 11



PK 01/396x546x	h	FCPK-1	FCPK-2
	36	■	■
	46	■	■

PK 11/396x546x	h	FCPK-1	FCPK-2
	36	■	■
	46	■	■

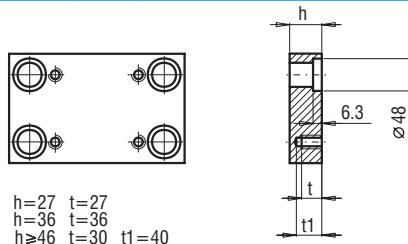
PK 21
PK 22



PK 21/346x546x	h	FCPK-1	FCPK-2
	27	■	■
	36	■	■

PK 22/346x546x	h	FCPK-1	FCPK-2
	27	■	■
	36	■	■

PK 03
PK 31

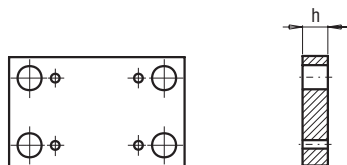


h=27 t=27
h=36 t=36
h≥46 t=30 t1=40

PK 03/346x546x PK 31/346x546x	h	FCPK-1	FCPK-2	FCPK-3	*	*
	27	■	■	■		
	36	■	■	■		
	46	■	■	■		
	56	■	■	■		
	66	■	■	■		
	76	■	■	■		
	86	■	■	■		
	96	■	■	■		
	116	■	■	■		
	136	■	■	■		

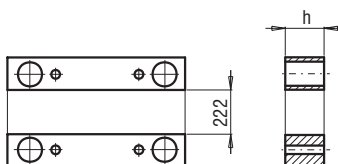
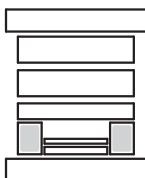
*Inne gatunki materiałów - patrz str. I.3
*For other steel types - see page no I.3

PK 04



PK 04/346x546x	h	FCPK-1	FCPK-2
	36	■	■
	46	■	■

PK 05



PK 05/62x546x	h	FCPK-1
	66	■
	76	■
	86	■
	96	■
	116	■
	136	■