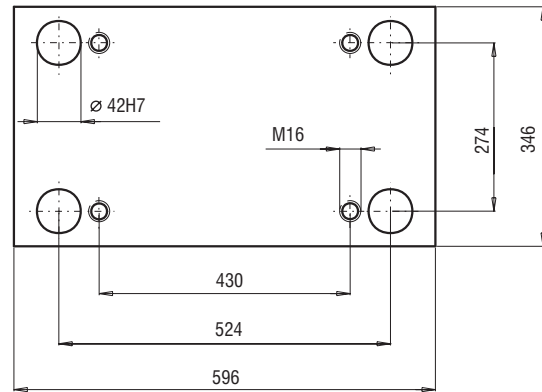
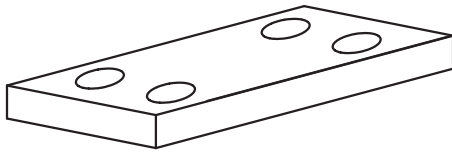
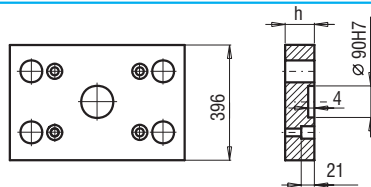


346x596



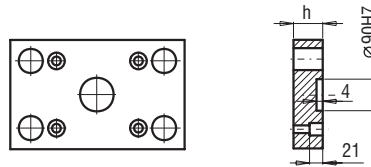
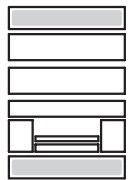
PK 01
PK 11



PK 01/396x596x	h	FCPK-1	FCPK-2			
	36	■	■			
	46	■	■			

PK 11/396x596x	h	FCPK-1	FCPK-2			
	36	■	■			
	46	■	■			

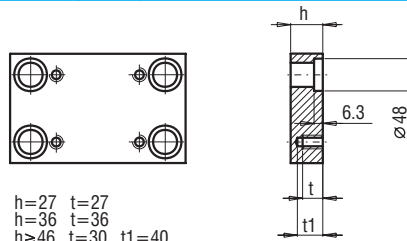
PK 21
PK 22



PK 21/346x596x	h	FCPK-1	FCPK-2			
	27	■	■			
	36	■	■			

PK 22/346x596x	h	FCPK-1	FCPK-2			
	27	■	■			
	36	■	■			

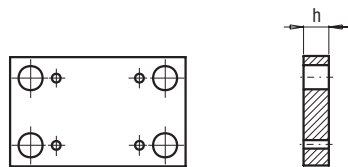
PK 03
PK 31



PK 03/346x596x	h	FCPK-1	FCPK-2	FCPK-3	*	*
PK 31/346x596x	27	■	■	■		
	36	■	■	■		
	46	■	■	■		
	56	■	■	■		
	66	■	■	■		
	76	■	■	■		
	86	■	■	■		
	96	■	■	■		
	116	■	■	■		
	136	■	■	■		

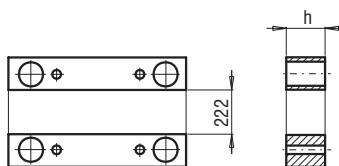
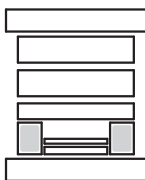
*Inne gatunki materiałów - patrz str. I.3
*For other steel types - see page no I.3

PK 04



PK 04/346x596x	h	FCPK-1	FCPK-2			
	36	■	■			
	46	■	■			

PK 05



PK 05/62x596x	h	FCPK-1				
	66	■				
	76	■				
	86	■				
	96	■				
	116	■				
	136	■				