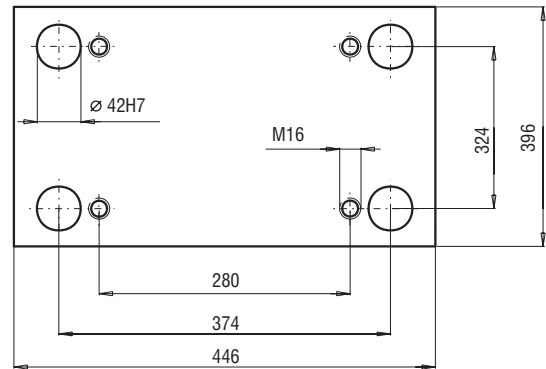
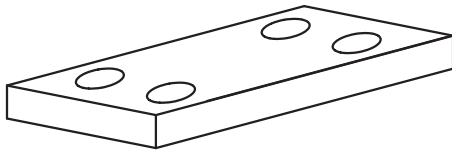
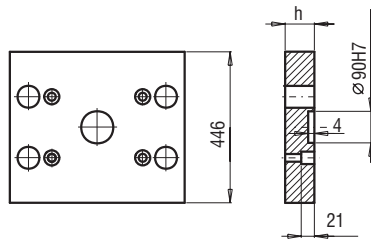


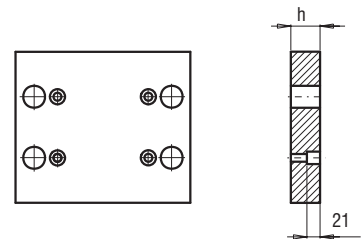
396x446



PK 01
PK 11

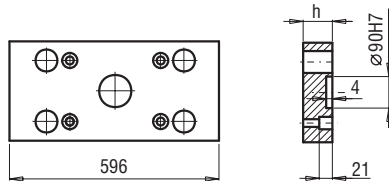
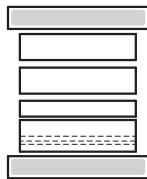


PK 01/446x446x	h	FCPK-1	FCPK-2
	27	■	■
	36	■	■
	46	■	■

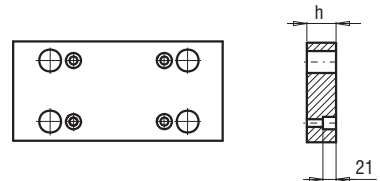


PK 11/446x446x	h	FCPK-1	FCPK-2
	27	■	■
	36	■	■
	46	■	■

PK 02
PK 12

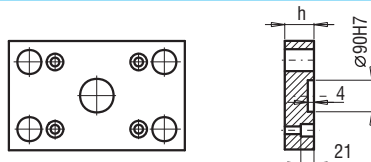
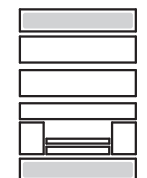


PK 02/396x596x	h	FCPK-1	FCPK-2
	27	■	■
	36	■	■
	46	■	■

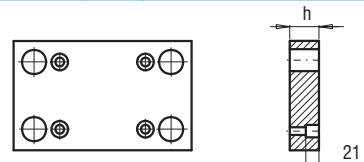


PK 12/396x596x	h	FCPK-1	FCPK-2
	27	■	■
	36	■	■
	46	■	■

PK 21
PK 22

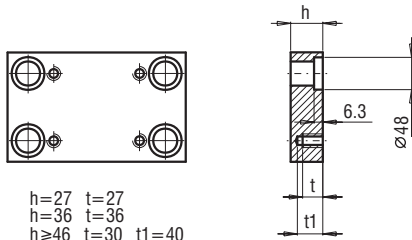


PK 21/396x446x	h	FCPK-1	FCPK-2
	27	■	■
	36	■	■



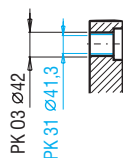
PK 22/396x446x	h	FCPK-1	FCPK-2
	27	■	■
	36	■	■

PK 03
PK 31



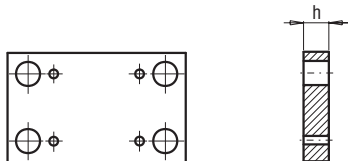
h=27 t=27
h=36 t=36
h>=46 t=30 t1=40

PK 03/396x446x PK 31/396x446x	h	FCPK-1	FCPK-2	FCPK-3	*	*
	27	■	■	■		
	36	■	■	■		
	46	■	■	■		
	56	■	■	■		
	66	■	■	■		
	76	■	■	■		
	86	■	■	■		
	96	■	■	■		
	116	■	■	■		



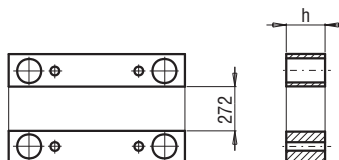
*Inne gatunki materiałów - patrz str. I.3
*For other steel types - see page no I.3

PK 04



PK 04/396x446x	h	FCPK-1	FCPK-2
	36	■	■
	46	■	■

PK 05



PK 05/62x446x	h	FCPK-1
	56	■
	66	■
	76	■
	86	■
	96	■
	116	■