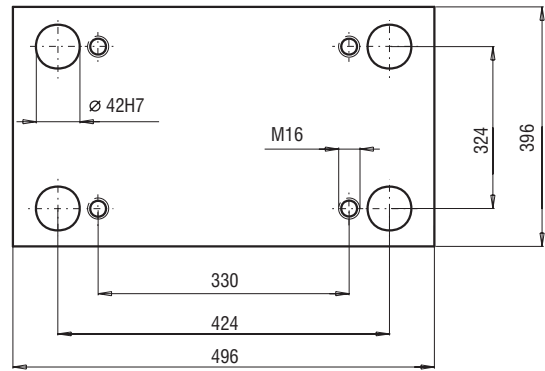
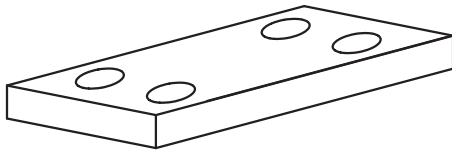
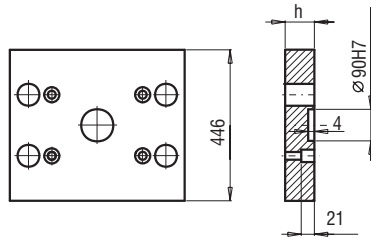
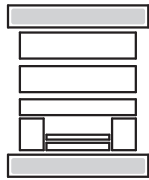


396x496



PK 01
PK 11



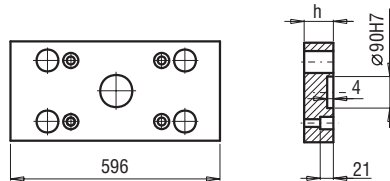
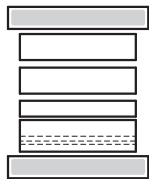
PK 01/446x496x

h	FCPK-1	FCPK-2
36	■	■
46	■	■

PK 11/446x496x

h	FCPK-1	FCPK-2
36	■	■
46	■	■

PK 02
PK 12



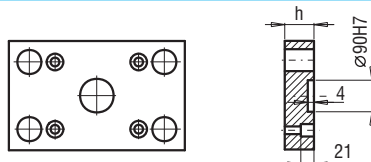
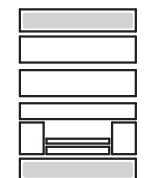
PK 02/396x596x

h	FCPK-1	FCPK-2
36	■	■
46	■	■

PK 12/396x596x

h	FCPK-1	FCPK-2
36	■	■
46	■	■

PK 21
PK 22



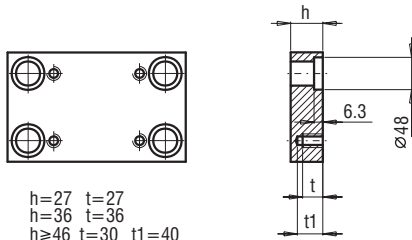
PK 21/396x496x

h	FCPK-1	FCPK-2
27	■	■
36	■	■

PK 22/396x496x

h	FCPK-1	FCPK-2
27	■	■
36	■	■

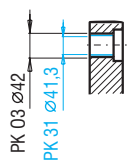
PK 03
PK 31



PK 03/396x496x

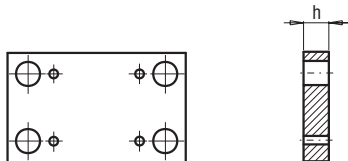
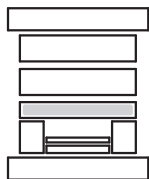
PK 31/396x496x

h	FCPK-1	FCPK-2	FCPK-3	*	*
27	■	■	■		
36	■	■	■		
46	■	■	■		
56	■	■	■		
66	■	■	■		
76	■	■	■		
86	■	■	■		
96	■	■	■		
116	■	■	■		
136	■	■	■		



*Inne gatunki materiałów - patrz str. I.3
*For other steel types - see page no I.3

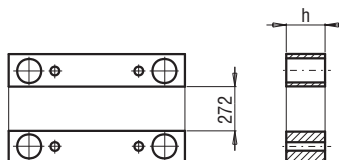
PK 04



PK 04/396x496x

h	FCPK-1	FCPK-2
36	■	■
46	■	■

PK 05



PK 05/62x496x

h	FCPK-1
66	■
76	■
86	■
96	■
116	■
136	■