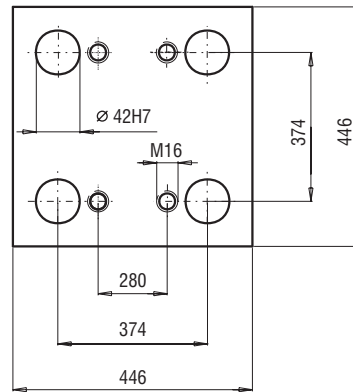
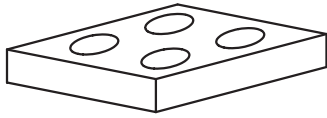
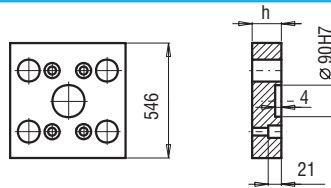


446x446



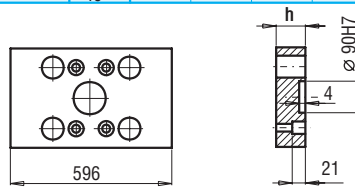
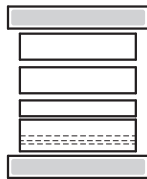
PK 01
PK 11



PK 01/546x446x	h	FCPK-1	FCPK-2
	36	■	■
	46	■	■

PK 11/546x446x	h	FCPK-1	FCPK-2
	36	■	■
	46	■	■

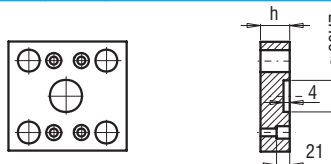
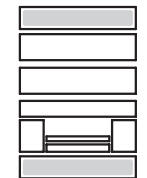
PK 02
PK 12



PK 02/446x596x	h	FCPK-1	FCPK-2
	36	■	■
	46	■	■

PK 12/446x596x	h	FCPK-1	FCPK-2
	36	■	■
	46	■	■

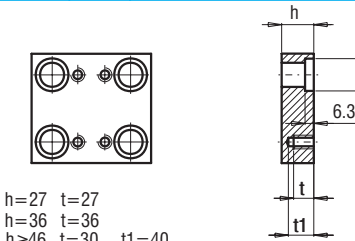
PK 21
PK 22



PK 21/446x446x	h	FCPK-1	FCPK-2
	27	■	■
	36	■	■

PK 22/446x446x	h	FCPK-1	FCPK-2
	27	■	■
	36	■	■

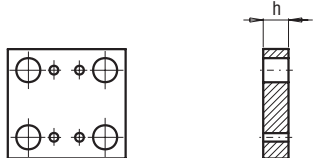
PK 03
PK 31



PK 03/446x446x	h	FCPK-1	FCPK-2	FCPK-3	*	*
PK 31/446x446x	27	■	■	■		
	36	■	■	■		
	46	■	■	■		
	56	■	■	■		
	66	■	■	■		
	76	■	■	■		
	86	■	■	■		
	96	■	■	■		
	116	■	■	■		

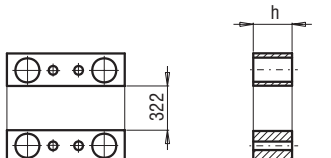
*Inne gatunki materiałów - patrz str. I.3
*For other steel types - see page no I.3

PK 04



PK 04/446x446x	h	FCPK-1	FCPK-2	FCPK-3
	36	■	■	
	46	■	■	

PK 05



PK 05/62x446x	h	FCPK-1
	56	■
	66	■
	76	■
	86	■
	96	■
	116	■