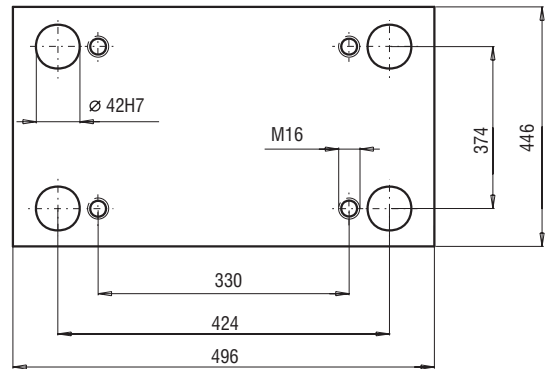
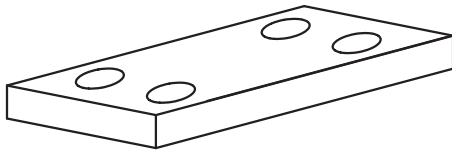
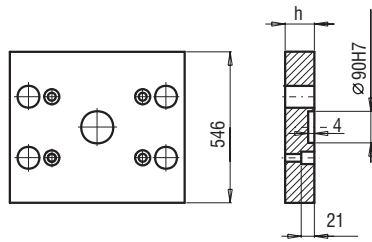


**446x496**



PK 01  
PK 11



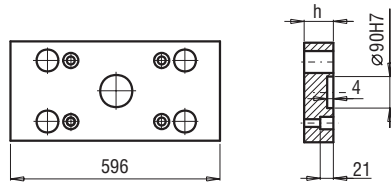
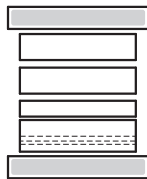
PK 01/546x496x

h	FCPK-1	FCPK-2
36		
46		

PK 11/546x496x

h	FCPK-1	FCPK-2
36		
46		

PK 02  
PK 12



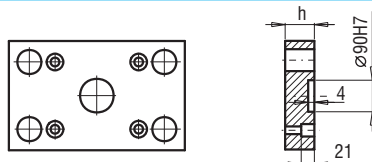
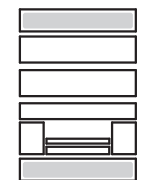
PK 02/446x596x

h	FCPK-1	FCPK-2
36		
46		

PK 12/446x596x

h	FCPK-1	FCPK-2
36		
46		

PK 21  
PK 22



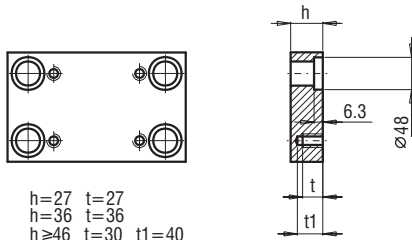
PK 21/446x496x

h	FCPK-1	FCPK-2
27		
36		

PK 22/446x496x

h	FCPK-1	FCPK-2
27		
36		

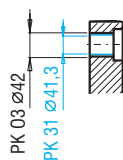
PK 03  
PK 31



h=27 t=27  
h=36 t=36  
h≥46 t=30 t1=40

PK 03/446x496x  
PK 31/446x496x

h	FCPK-1	FCPK-2	FCPK-3	*	*
27					
36					
46					
56					
66					
76					
86					
96					
116					
136					



\*Inne gatunki materiałów - patrz str. I.3  
\*For other steel types - see page no I.3

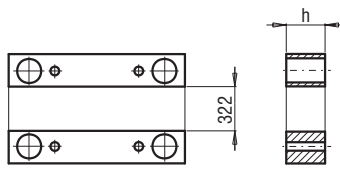
PK 04



PK 04/446x496x

h	FCPK-1	FCPK-2
46		
56		

PK 05



PK 05/62x496x

h	FCPK-1
66	
76	
86	
96	
116	
136	