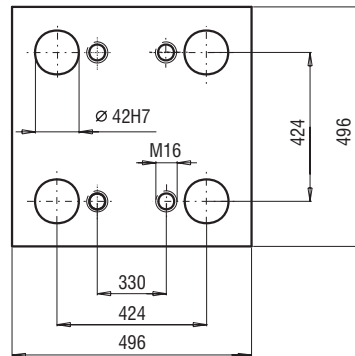
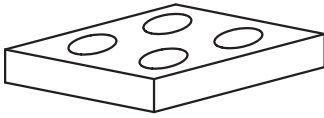
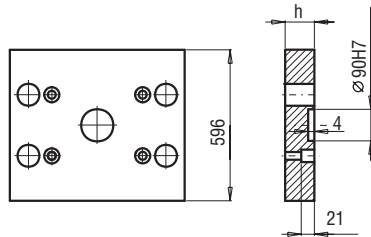
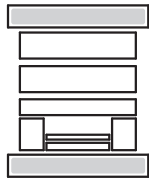


**496x496**



PK 01  
PK 11



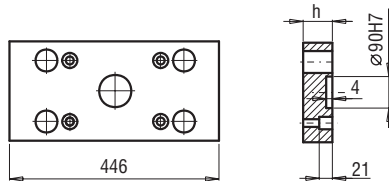
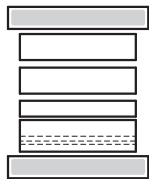
PK 01/596x496x

h	FCPK-1	FCPK-2
34	■	■
36	■	■
56	■	■

PK 11/596x496x

h	FCPK-1	FCPK-2
36	■	■
46	■	■
56	■	■

PK 02  
PK 12



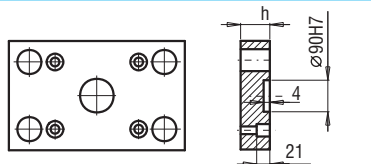
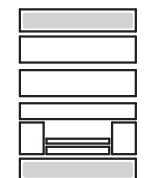
PK 02/496x596x

h	FCPK-1	FCPK-2
36	■	■
46	■	■
56	■	■

PK 12/496x596x

h	FCPK-1	FCPK-2
36	■	■
46	■	■
56	■	■

PK 21  
PK 22



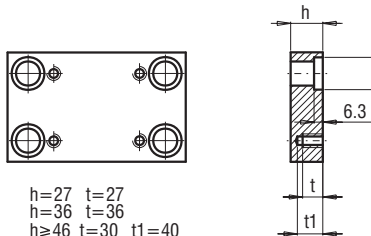
PK 21/496x496x

h	FCPK-1	FCPK-2
27	■	■
36	■	■
46	■	■

PK 22/496x496x

h	FCPK-1	FCPK-2
27	■	■
36	■	■
46	■	■

PK 03  
PK 31

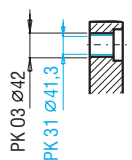


h=27 t=27  
h=36 t=36  
h≥46 t=30 t1=40

PK 03/496x496x

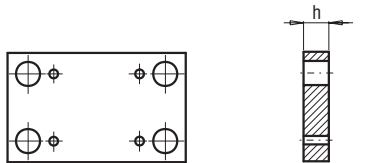
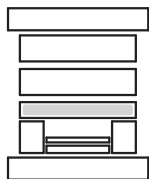
PK 31/496x496x

h	FCPK-1	FCPK-2	FCPK-3	*	*
27	■	■	■		
36	■	■	■		
46	■	■	■		
56	■	■	■		
66	■	■	■		
76	■	■	■		
86	■	■	■		
96	■	■	■		
116	■	■	■		
136	■	■	■		



\*Inne gatunki materiałów - patrz str. I.3  
\*For other steel types - see page no I.3

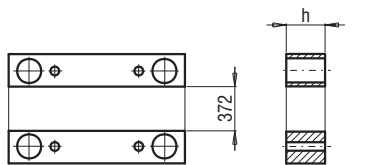
PK 04



PK 04/496x496x

h	FCPK-1	FCPK-2
46	■	■
56	■	■

PK 05



PK 05/62x496x

h	FCPK-1
66	■
76	■
86	■
96	■
116	■
136	■