

**22 selections of SPEC springs and washers**

Compression Springs A	Pages 6-11
Compression Spring B	Pages 12-37
Extension Springs A	Pages 38-42
Extensions Springs B	Pages 44-56
Compression & Extension Springs (metric lengths)	Page 57
Finger Spring Washers	Page 58
Wave Spring Washers	Page 59
Belleville Springs	Pages 60-62
Disc Springs	Pages 63-65
Curved Spring Washers	Pages 68-69
Torsion Springs	Pages 70-72
Constant-Force Springs	Page 73

For experimental, development, prototype and maintenance work.

Engineers, designers and specifiers of coiled springs and spring washers find these packaged assortments of Associated Spring SPEC items especially convenient in their work. Repair and maintenance personnel also, use these assortments for hundreds of day to day requirements to keep production equipment running.

Assortments are packaged in metal boxes individually identified to enable easy identification and re-order.

**IMPORTANT** Specify S/S or M/W.

**22 sélections de ressorts et de rondelles SPEC**

Ressorts de Compression A	6-11
Ressorts de Compression B	12-37
Ressorts de Traction A	38-42
Ressorts de Traction B	44-56
Ressorts de Compression et de Traction	57
Rondelles Ressort	58
Rondelles Ondulées	59
Rondelles Belleville	60-62
Ressorts Disque	63-65
Rondelles Sinus	68-69
Ressorts de Torsion	70-72
Ressorts à Force Constante	73

Pour l'expérimentation, pour le développement, pour les prototypes et pour la maintenance:

Ingénieurs, Dessinateurs et personnes chargées de la spécification de rondelles et de ressorts, trouvent ces assortiments de pièces SPEC en boîtes particulièrement utiles dans leur travail. Le personnel des services de réparation et de maintenance utilisent également ces assortiments pour des centaines d'applications quotidiennes, pour maintenir les équipements de production en fonctionnement.

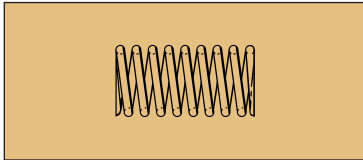
**Important: précisez acier inoxydable "S" ou corde à piano "M".**

Les assortiments sont emballés dans des boîtes métalliques et sont repérés individuellement pour faciliter l'identification et le réapprovisionnement.

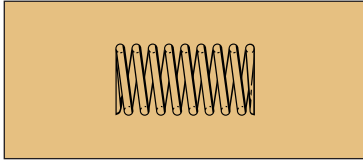


# ASSORTMENTS

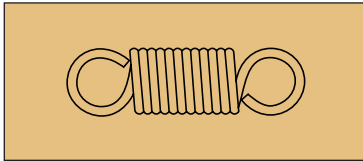
# ASSORTIMENTS



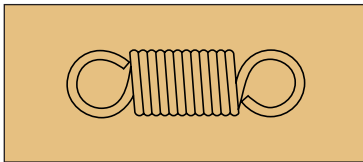
<b>COMPRESSION A</b>					
Wire Diameter in mm	Total No. of Parts	Total No. of Springs	Part No.	Price Group M/W	Price Group S/S
0.40 to 1	30	300	<b>A53000</b>	<b>DD</b>	<b>DE</b>
0.63 to 1.6	12	120	<b>A53020</b>	<b>DA</b>	<b>DB</b>
0.50 to 2	21	200	<b>A53040</b>	<b>DD</b>	<b>DF</b>



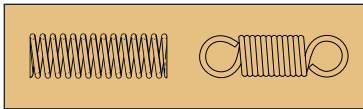
<b>COMPRESSION B</b>					
Wire Diameter in mm	Total No. of Parts	Total No. of Springs	Part No.	Price Group M/W	Price Group S/S
0.41 to 1.07	84	168	<b>C102AL</b>	<b>DC</b>	<b>DD</b>
0.66 to 1.6	84	168	<b>C102AM</b>	<b>DD</b>	<b>DE</b>
0.7 to 3.18	61	122	<b>C102AH</b>	<b>DC</b>	<b>DE</b>



<b>EXTENSION A</b>					
Wire Diameter in mm	Total No. of Parts	Total No. of Springs	Part No.	Price Group M/W	Price Group S/S
0.40 to 1	30	300	<b>A53010</b>	<b>DE</b>	<b>DG</b>
0.63 to 1.6	12	120	<b>A53030</b>	<b>DB</b>	<b>DC</b>
0.50 to 2	24	200	<b>A53050</b>	<b>DE</b>	<b>DG</b>



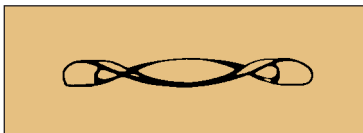
<b>EXTENSION B</b>					
Wire Diameter in mm	Total No. of Parts	Total No. of Springs	Part No.	Price Group M/W	Price Group S/S
0.56 to 1.40	56	112	<b>E202AL</b>	<b>DC</b>	<b>DD</b>
0.94 to 1.91	43	86	<b>E202AM</b>	<b>DD</b>	<b>DE</b>
1.40 to 2.92	28	56	<b>E202AH</b>	<b>DC</b>	<b>DE</b>



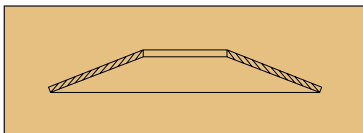
<b>COMPRESSION/EXTENSION</b>					
Wire Diameter in mm	Total No. of Parts	Total No. of Springs	Part No.	Price Group M/W	Price Group S/S
0.50 to 2	42	200	<b>A53060</b>	<b>DF</b>	<b>DH</b>



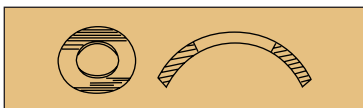
<b>FINGER SPRING WASHERS</b> <span style="float: right;">High Carbon Steel to ASTM-A684</span>					
Outside Diameter mm	Total No. of Parts	Total No. of Springs	Part No.	Price Group M/W	Price Group S/S
15.11 to 51.36	20	40	<b>F502A</b>	<b>DF</b>	<b>DH</b>



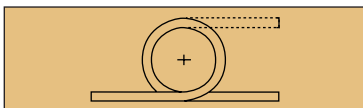
<b>WAVE SPRING WASHER</b> <span style="float: right;">High Carbon Steel to ASTM-A684 Stainless Steel</span>					
Outside Diameter mm	Total No. of Parts	Total No. of Springs	Part No.	Price Group M/W	Price Group S/S
4.65 to 84.53	35	70	<b>W602AS</b>	<b>DH</b>	<b>DG</b>
89.38 to 186.06	11	22	<b>W602AH</b>	<b>DH</b>	<b>DG</b>



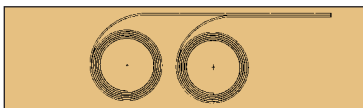
<b>BELLEVILLE WASHER</b> <span style="float: right;">High Carbon Steel to ASTM-A684 Stainless Steel</span>					
Outside Diameter mm	Total No. of Parts	Total No. of Springs	Part No.	Price Group M/W	Price Group S/S
4.75 to 28.58	75	150	<b>B402AS</b>	<b>DH</b>	<b>DG</b>
31.75 to 76.20	49	98	<b>B401AH</b>	<b>DH</b>	<b>DG</b>



<b>CURVED SPRING WASHER</b> <span style="float: right;">High Carbon Steel to ASTM-A684 Stainless Steel</span>					
Outside Diameter mm	Total No. of Parts	Total No. of Springs	Part No.	Price Group M/W	Price Group S/S
5.46 to 28.02	65	130	<b>U701A</b>	<b>DH</b>	<b>DH</b>



<b>TORSION SPRING</b> <span style="float: right;">Stainless Steel to 302</span>					
Wire Diameter mm	Total No. of Parts	Total No. of Springs	Part No.	Price Group M/W	Price Group S/S
0.30 to 1.98	82	164	<b>T301A</b>	<b>DH</b>	<b>DH</b>



<b>CONSTANT FORCE SPRING</b> <span style="float: right;">Stainless Steel to 302</span>					
Length mm	Total No. of Parts	Total No. of Springs	Part No.	Price Group M/W	Price Group S/S
381 to 1219	14	28	<b>CF110A</b>	<b>DG</b>	<b>DG</b>