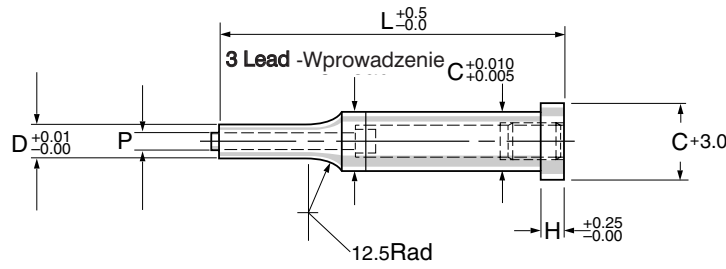


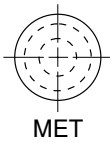
Slug Ejector Punches

Stemple z wyrzutnikiem

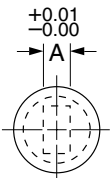


Overall length up to 100mm – Całkowita długość do 100mm

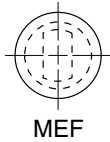
Any alternative dimensions to the above can be specified – Dostępne są też inne wymiary niż określone powyżej



MET



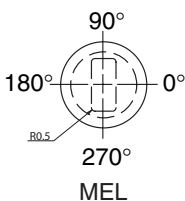
MER



MEF

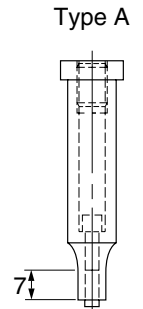


MEW

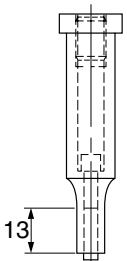


MEL

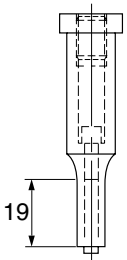
Symbol									Min
MET	MER	MEF	MEW	MEL	C	H	P	A/D	
MET5	MER5	MEF5	MEW5	MEL5	5	4.2*	0.8	2.3	
MET6	MER6	MEF6	MEW6	MEL6	6	5.0	0.8	2.3	
MET7	MER7	MEF7	MEW7	MEL7	7	5.0	1.0	3.0	
MET8	MER8	MEF8	MEW8	MEL8	8	5.0	1.0	3.0	
MET10	MER10	MEF10	MEW10	MEL10	10	5.0	1.5	4.8	
MET12	MER12	MEF12	MEW12	MEL12	12	5.0	1.5	4.8	
MET13	MER13	MEF13	MEW13	MEL13	13	5.0	1.5	4.8	
MET14	MER14	MEF14	MEW14	MEL14	14	5.0	1.5	4.8	
MET16	MER16	MEF16	MEW16	MEL16	16	5.0	2.4	5.5	
MET18	MER18	MEF18	MEW18	MEL18	18	5.0	2.4	5.5	
MET19	MER19	MEF19	MEW19	MEL19	19	6.4*	2.4	5.5	
MET20	MER20	MEF20	MEW20	MEL20	20	6.4*	2.4	5.5	
MET22	MER22	MEF22	MEW22	MEL22	22	6.4*	2.4	5.5	
MET25	MER25	MEF25	MEW25	MEL25	25	6.4*	2.4	5.5	
MET28	MER28	MEF28	MEW28	MEL28	28	6.4*	2.4	5.5	
MET30	MER30	MEF30	MEW30	MEL30	30	6.4*	2.4	5.5	
MET32	MER32	MEF32	MEW32	MEL32	32	6.4*	2.4	5.5	
MET35	MER35	MEF35	MEW35	MEL35	35	6.4*	2.4	5.5	
MET38	MER38	MEF38	MEW38	MEL38	38	6.4*	2.4	5.5	
MET40	MER40	MEF40	MEW40	MEL40	40	6.4*	2.4	5.5	
MET45	MER45	MEF45	MEW45	MEL45	45	6.4*	2.4	5.5	



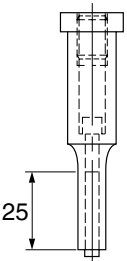
Type A



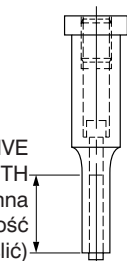
Type B



Type C



Type D



Type AL

Example order – Przykładowe zamówienie

2 off MEF35D 30.0 x 22.0 75 lg.

6 off MET13C 9.50 80 lg.

Location Flats if required (see page 57.58) – Płaszczyzny ustalające na życzenie (patrz strona 57.58)

Ejector components (see page 45) – Elementy składowe wyrzutnika (patrz strona 45)

*5mm Head thickness available – Główna o grubości 5mm na życzenie

Imperial sizes also available – Wszystkie wymiary dostępne także w wersji calowej

ALTERNATIVE LENGTH SPECIFY Inna długość (określić)