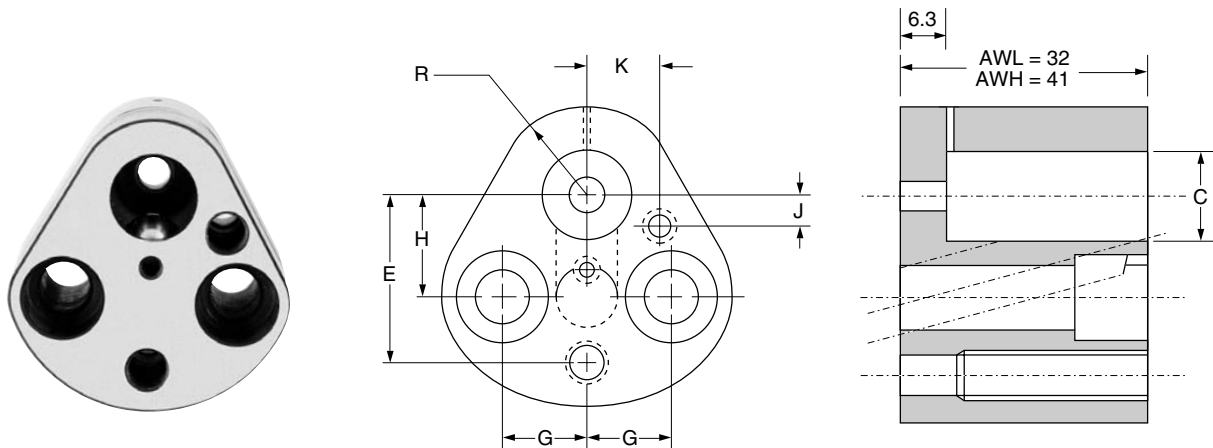


# Ball-Lock Retainers

Oprawki do stempli szybkowymiennych



## Light Duty – do niskich obciążeń

Catalogue Number Nr.katalog.	Shank Dia. Średnica trzonu stempla C	E	G	R	H	J	K	Screw Size Gwint
AWL-06	06	23.000	11.10	8.0	19.00	9.00	8.00	M6
AWL-10	10	26.924	11.12	9.5	19.05	7.50	9.00	M8
AWL-13	13	29.972	14.27	12.7	19.05	6.50	12.00	M8
AWL-16	16	31.750	15.87	14.3	19.05	6.00	13.50	M8
AWL-20	20	33.528	17.47	17.5	19.05	5.00	16.50	M10
AWL-25	25	40.640	19.84	22.2	23.82	7.00	22.00	M12
AWL-32	32	40.640	19.84	22.2	23.82	7.00	22.00	M12
*AWL-38	38	43.993	24.00	26.0	27.00	10.00	26.00	M12

## Heavy Duty – do wysokich obciążeń

Catalogue Number Nr.katalog.	Shank Dia. Średnica trzonu stempla C	E	G	R	H	J	K	Screw Size Gwint
AWH-10	10	26.924	11.12	9.5	19.05	7.50	9.00	M8
AWH-13	13	29.972	14.27	12.7	19.05	6.50	12.00	M8
AWH-16	16	31.750	15.87	14.3	19.05	6.00	13.50	M8
AWH-20	20	33.528	17.47	17.5	19.05	5.00	16.50	M10
AWH-25	25	40.640	19.84	22.2	23.82	7.00	22.00	M12
AWH-32	32	40.640	19.84	22.2	23.82	7.00	22.00	M12
AWH-40	40	43.993	24.00	26.00	27.00	10.00	26.00	M12

Example order – przykładowe zamówienie

5 off AWH-13

\*AWL-38 is manufactured as a special – AWL-38 jest traktowany jako wyrób specjalny