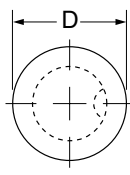
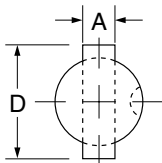


# Light Duty Ball-Lock Punches – Point Larger than Shank

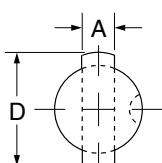
Gh'Ya d'Y gmV\_ck na ]YbbY'Xc'b]g\_]W'cVW] Y '!\_c V0K\_U'k ]\_gU'b] 'fncb



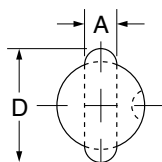
ALT



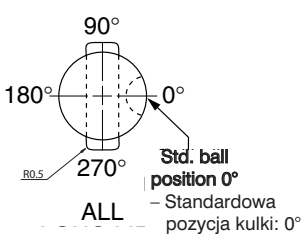
ALR



ALF

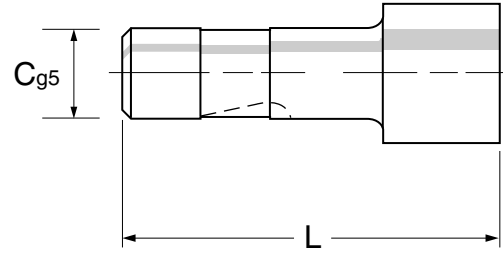


ALW

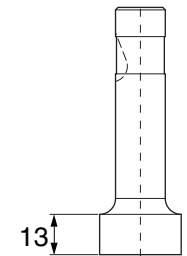


ALL

SOLID TYPE – Stempel zwykły



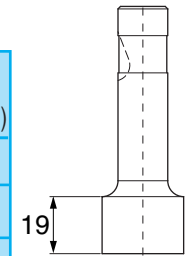
Type B



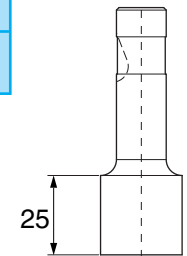
Overall lengths 60-100 – Całkowita długość 60-100 mm

Symbol					C	A (min)	D (max)
ALT10	ALR10	ALF10	ALW10	ALL	10	3.0 – 24.00	
ALT13	ALR13	ALF13	ALW13	ALL	13	3.0 – 32.00	19
ALT16	ALR16	ALF16	ALW16	ALL	16	3.0 – 38.00	
ALT20	ALR20	ALF20	ALW20	ALL	20	3.0 – 38.00	
ALT25	ALR25	ALF25	ALW25	ALL	25	3.0 – 45.00	
ALT32	ALR32	ALF32	ALW32	ALL	32	3.0 – 45.00	
ALT38	ALR38	ALF38	ALW38	ALL	38	3.0 – 50.00	

Type C



Type D



Example order – Przykładowe zamówienie  
ALL 20 8,6 x 9,6 x 90 BS 90°

Alternative shapes available, see pages 54,55 – Inne kształty-patrz strony 54,55

Type AL

