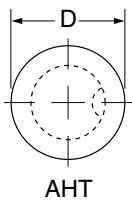
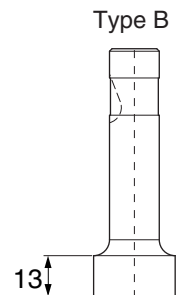
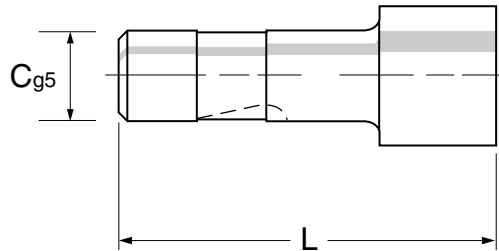


Heavy Duty Ball-Lock Punches – Point Larger than Shank

GHya d'Y'gmV_ck na]YbbY'Xc'k nqc_]M'cWV] Y '!_c V0K_U'k]_gnU'b] 'frcb

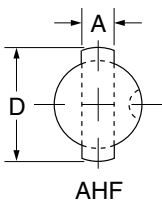
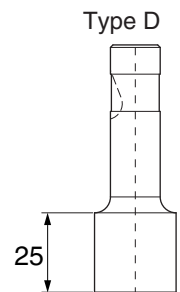
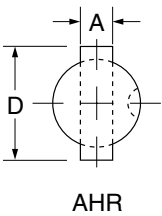
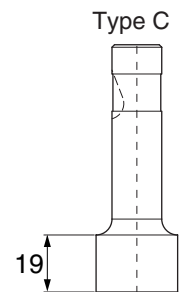


SOLID TYPE – Stempel zwykły



Overall lengths 60-100 – Całkowita długość 60-100 mm

Symbol					. C	A (min)	(max)
AHT10	AHR10	AHF10	AHW10	AHL	10	3.0	24.00
AHT13	AHR13	AHF13	AHW13	AHL	13	3.0	32.00
AHT16	AHR16	AHF16	AHW16	AHL	16	3.0	38.00
AHT20	AHR20	AHF20	AHW20	AHL	20	3.0	38.00
AHT25	AHR25	AHF25	AHW25	AHL	25	3.0	45.00
AHT32	AHR32	AHF32	AHW32	AHL	32	3.0	45.00
AHT40	AHR40	AHF40	AHW40	AHL	40	3.0	50.00



Example order - Przykładowe zamówienie

AHR16C 8.4 x 21.60 x 80

Alternative shapes available, see pages 54,55 – Inne kształty-patrz strony 54,55

