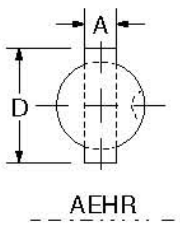
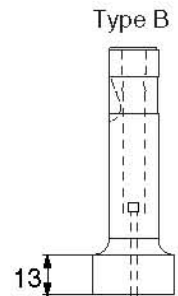
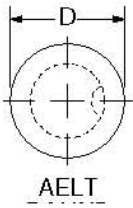
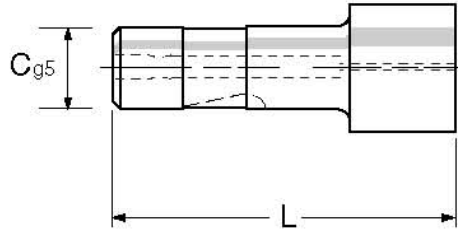


# Heavy Duty Ejector Ball-Lock Punches – Point Larger than Shank

Stemple szybkowymienne z wyrzutnikiem do wysokich obciążeń - końcówka większa niż trzon

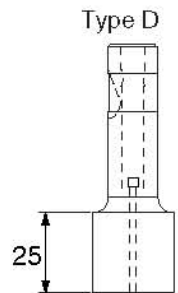
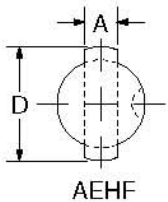
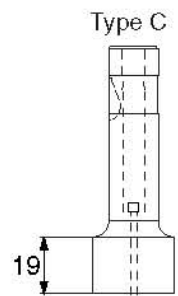


## EJECTOR TYPE – Stempel z wyrzutnikiem



Overall lengths 60-100 – Całkowita długość 60-100 mm

Symbol					C	A (min)	D (max)
AEHT10	AEHR10	AEHF10	AEHW10	AEHL10	10	3.0 – 24.00	
AEHT13	AEHR13	AEHF13	AEHW13	AEHL13	13	3.0 – 32.00	
AEHT16	AEHR16	AEHF16	AEHW16	AEHL16	16	3.0 – 38.00	
AEHT20	AEHR20	AEHF20	AEHW20	AEHL20	20	3.0 – 38.00	
AEHT25	AEHR25	AEHF25	AEHW25	AEHL25	25	3.0 – 45.00	
AEHT32	AEHR32	AEHF32	AEHW32	AEHL32	32	3.0 – 45.00	
AEHT40	AEHR40	AEHF40	AEHW40	AEHL40	40	3.0 – 50.00	



Example order - Przykładowe zamówienie

**AEHR16C 8.4 x 21.60 x 80 BS 35°**

Alternative shapes available, see pages 54,55 – Inne kształty-patrz strony 54,55

