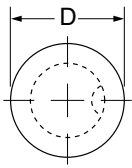
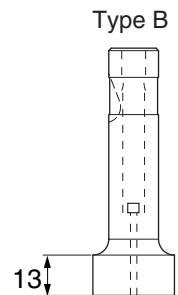
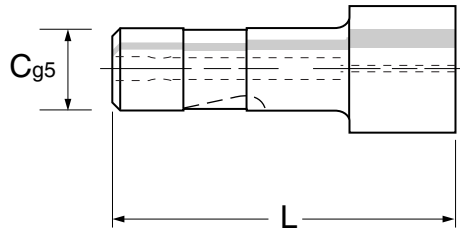


Light Duty Ejector Ball-Lock Punches – Point Larger than Shank

GhYa d'Y gmv_ck na JYbbY'n'k nfrn Hb]_Ya 'Xc'b]g_W'cWY Y '!'_c V0K_U'k]_grU'b] 'frncb



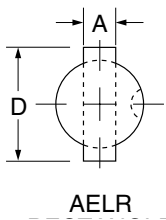
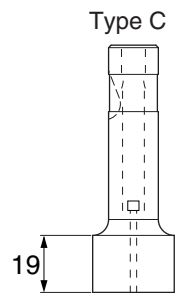
EJECTOR TYPE – Stempel z wyrzutnikiem



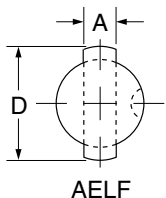
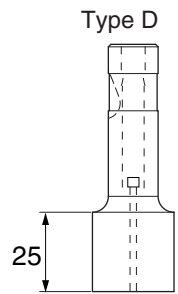
AELT

Overall lengths 60-100 – Całkowita długość 60-100 mm

Symbol					C	A (min)	D (max)
AELT10	AELR10	AELF10	AELW10	AELL10	10	3.0 – 24.00	
AELT13	AELR13	AELF13	AELW13	AELL13	13	3.0 – 32.00	
AELT16	AELR16	AELF16	AELW16	AELL16	16	3.0 – 38.00	
AELT20	AELR20	AELF20	AELW20	AELL20	20	3.0 – 38.00	
AELT25	AELR25	AELF25	AELW25	AELL25	25	3.0 – 45.00	
AELT32	AELR32	AELF32	AELW32	AELL32	32	3.0 – 45.00	
AELT38	AELR38	AELF38	AELW38	AELL38	38	3.0 – 50.00	



AELR

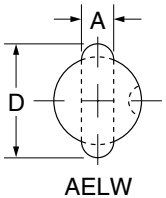


AELF

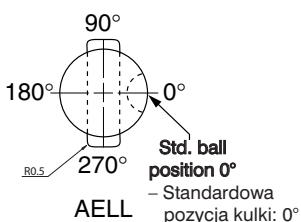
Example order - Przykładowe zamówienie

AELR16C 8.4 x 21.60 x 80 BS 35°

Alternative shapes available, see pages 54,55 – Inne kształty-patrz strony 54,55



AELW



AELL

