

4

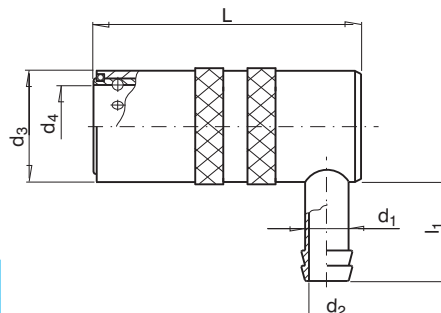
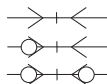
**Złącze kątowe - 90°  
Coupler - angle 90°**



Z zaworem  
With valve



Bez zaworu  
Without valve



NR KAT.	NR KAT.	NW	d1	d2	d3	d4	L	l1
CSK 060-06-90°	SK 060-06-90°	6	6	1/4"	4,5	17	9	41
CSK 060-08-90°	SK 060-08-90°		8	5/16"	6	17	9	41
CSK 060-09-90°	SK 060-09-90°		9	5/14"	6	17	9	41
CSK 060-10-90°	SK 060-10-90°		10	3/8"	6	17	9	41
CSK 090-10-90°	SK 090-10-90°	9	10	3/8"	8	23	13	51
CSK 090-13-90°	SK 090-13-90°		13	1/2"	9	23	13	51
CSK 190-19-90°	SK 190-19-90°	13	19	3/4"	13	31	19	78

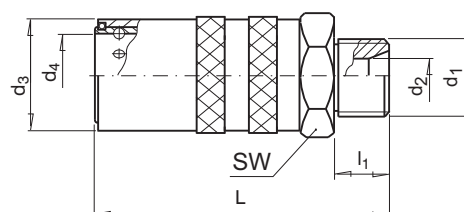
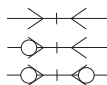
**Złącze proste z gwintem zewnętrznym  
Coupler with male thread connection**



Z zaworem  
With valve



Bez zaworu  
Without valve



NR KAT.	NR KAT.	NW	d1	d2	d3	d4	L	l1	SW
CSK 060-EG10	SK 060-EG10	6	M10x1	4,5	17	9	48	9	17
CSK 060-EG13	SK 060-EG13		G 1/4"	6	17	9	48	9	17
CSK 060-EG14	SK 060-EG14		M14x1,5	6	17	9	48	9	17
CSK 060-EG17	SK 060-EG17		G 3/8"	8	17	9	48	9	17
CSK 090-EG16	SK 090-EG16	9	M16x1,5	9	23	13	52	9	21
CSK 090-EG17	SK 090-EG17		G 3/8"	9	23	13	52	9	21
CSK 090-EG21	SK 090-EG21		G 1/2"	9	23	13	55	12	21
CSK 190-EG21	SK 190-EG21	13	G 1/2"	13	31	19	74	12	30
CSK 190-EG24	SK 190-EG24		M24x1,5	13	31	19	78	16	30

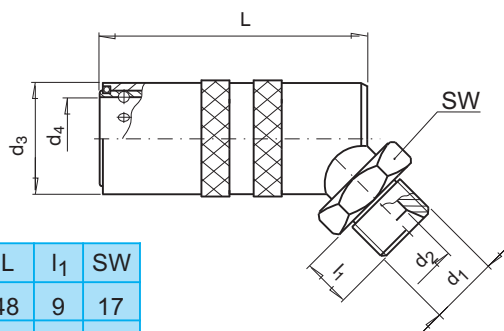
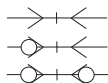
**Złącze kątowe- 45° z gwintem zewnętrznym  
Coupler - angle 45° with male thread connection**



Z zaworem  
With valve



Bez zaworu  
Without valve



NR KAT.	NR KAT.	NW	d1	d2	d3	d4	L	l1	SW
CSK 060-EG13-45°	SK 060-EG13-45°	6	G 1/4"	6	17	9	48	9	17
CSK 060-EG14-45°	SK 060-EG14-45°		M14x1,5	6	17	9	48	9	17
CSK 060-EG17-45°	SK 060-EG17-45°		G 3/8"	8	17	9	48	9	17
CSK 090-EG17-45°	SK 090-EG17-45°	9	G 3/8"	9	23	13	52	9	21
CSK 090-EG21-45°	SK 090-EG21-45°		G 1/2"	9	23	13	55	12	21
CSK 190-EG21-45°	SK 190-EG21-45°	13	G 1/2"	13	31	19	74	12	30
CSK 190-EG24-45°	SK 190-EG24-45°		M24x1,5	13	31	19	78	16	30