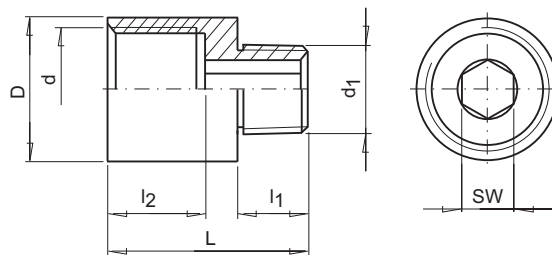


10

**Złączka redukcyjna  
Cylindrical reduction**

Material: MS58  
Material:MS58 ( Brass)

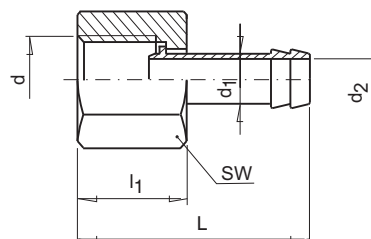
NR KAT.	d	d <sub>1</sub>	D	L	l <sub>1</sub>	l <sub>2</sub>	SW
BDM 14/10	M14x1,5	M10x1	17	22	7	13	6
BDR 13/10	R 1/4"	R 1/8"					
BDM 16/14	M16x1,5	M14x1,5	20	24	9	13	8
BDR 17/13	R 3/8"	R 1/4"					



**Koncówka do węży z nakrętką  
Hose tail with nut**

Material: MS58  
Material:MS58 ( Brass)

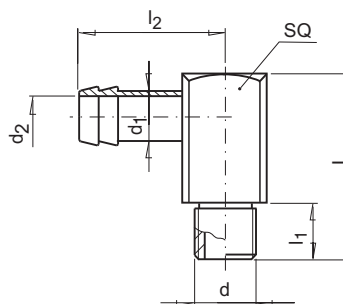
NR KAT.	d	d <sub>1</sub>	d <sub>2</sub>	l <sub>1</sub>	L	SW
SN 14	M14x1,5	9	6	15,5	34,5	17
SN 13	G 1/4"					
SN 16	M16x1,5	13	9	14	41	22
SN 17	G 3/8"					
SN 24	M24x1,5	19	13	20	52	30
SN 26	G 3/4"					32



**Końcówka do węży kątowa - 90°  
Angle nipple (90°)**

Material: MS58  
Material:MS58 ( Brass)

NR KAT.	d	d <sub>1</sub>	d <sub>2</sub>	l <sub>1</sub>	l <sub>2</sub>	L	SQ
AHE M8	M8x0,75	9	4,5	9	23	27	11
AHE M10	M10x1		6				
AHE 10	R 1/8"	13	9	11	32,5	34	15
AHE M14	M14x1,5						
AHE 13	R 1/4"	19	13	16	44	47	24
AHE M24	M24x1,5						22
AHE 21	R 1/2"						



**Redukcja  
Reduction**

Material: MS58  
Material:MS58 ( Brass)

NR KAT.	d	d <sub>1</sub>	l <sub>1</sub>	L	SW
RD 14/10	M14x1,5	M10x1	7	11	17
RD 18/14	M18x1,5	M14x1,5	9	14	22
RD 13/10	G 1/4"	G 1/8"	7	11	17
RD 17/13	G 3/8"	G 1/4"	9	13	19
RD 21/17	G 1/2"	G 3/8"	12	18	24
RD 24/16	M24x1,5	M16x1,5	16	24	27
RD 26/21	G 3/4"	G 1/2"	16	24	27

